

PPIII Envelop Installation Instructions

Case 50 Series

Table 1: Parts List

Part Number	Description	Qty
118640-040	KEY FOB PP WITH KEY CHAIN	1
123000-013	MOUNTING PLATE, PPIII	1
123000-150	ASSY, POWER HUB PPIII	1
123000-210	OP MANUAL PPIII ENVELOP	1
123000-228	INTEGRATION, CASE IH, PPIII	1
123100-017	ASSEMBLY RCM CONTROLLER PPIII	1
123100-040	POWER HARNESS 40' PPIII	1
123100-044	HARNESS, RCM ADAPTER TO PPIII	1
706530-286	CONNECTOR PLUG 35-PIN AMPSEAL	1
706530-446	PLUG CAVITY 16-20GA DEUTSCH	35
710100-539	SQ U-BOLT 5/16 X 2-1/2 X 3-1/2	3
713501-450	NUT FLANGE 5/16" X 18 SS	2
123000-121	ASSEMBLY, CASE 50 SERIES TIMER	1

Requirements

- Model Year 2023 Case "50 Series" Sprayer

Disconnect RCM



Figure 1: RCM Location

The RCM (Figure 1, Item 1) is located on the center boom.

1. Open main power breaker before beginning installation.
2. Unplug the J1 (Figure 1, Item 2) and J3 (Figure 1, Item 3) connectors from the RCM.

Install RCM Adapter

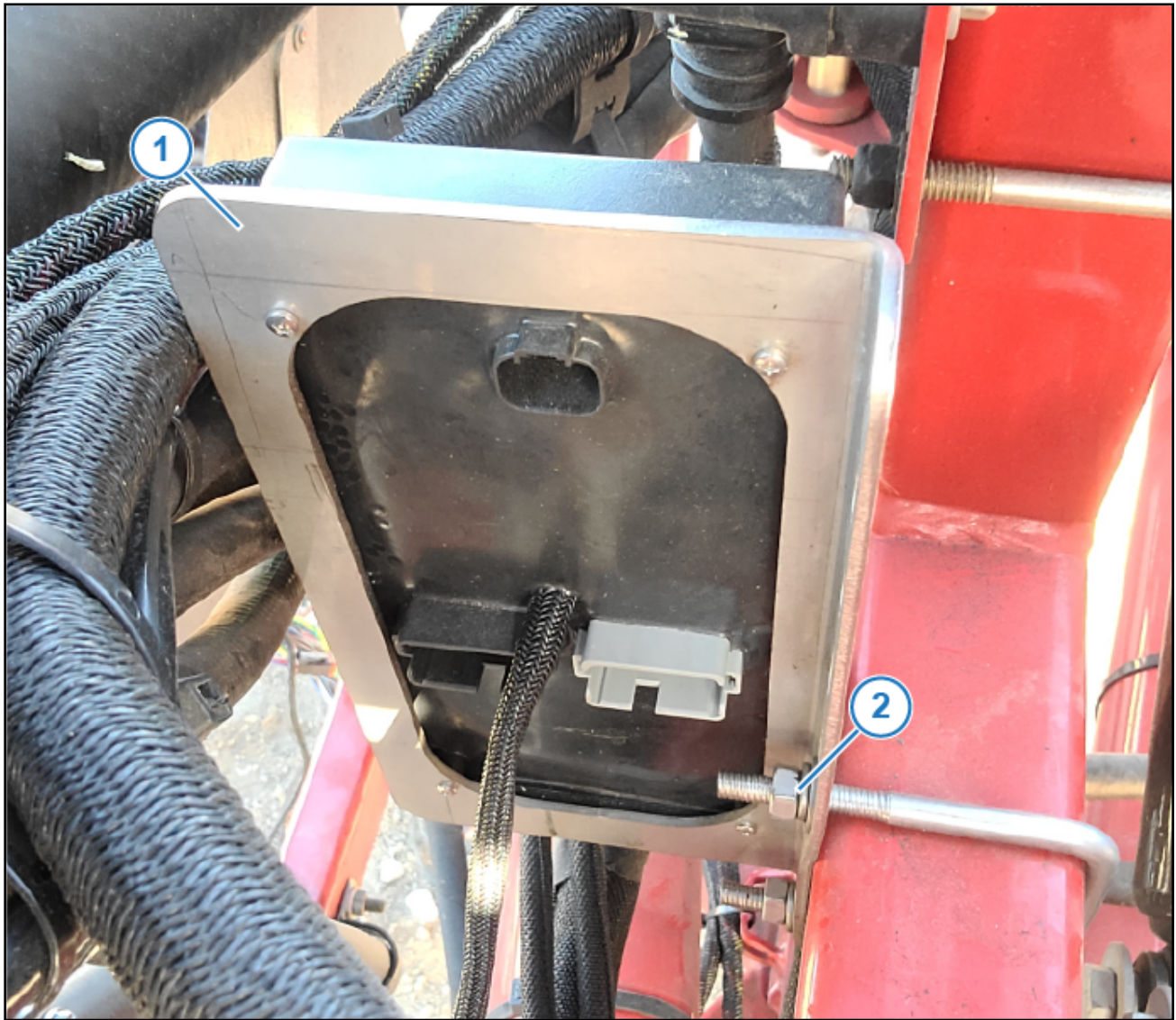


Figure 2: RCM Adapter Location

3. Install the RCM Adapter (P/N:) (Figure 2, Item 1) using the included hardware (Figure 2, Item 2).

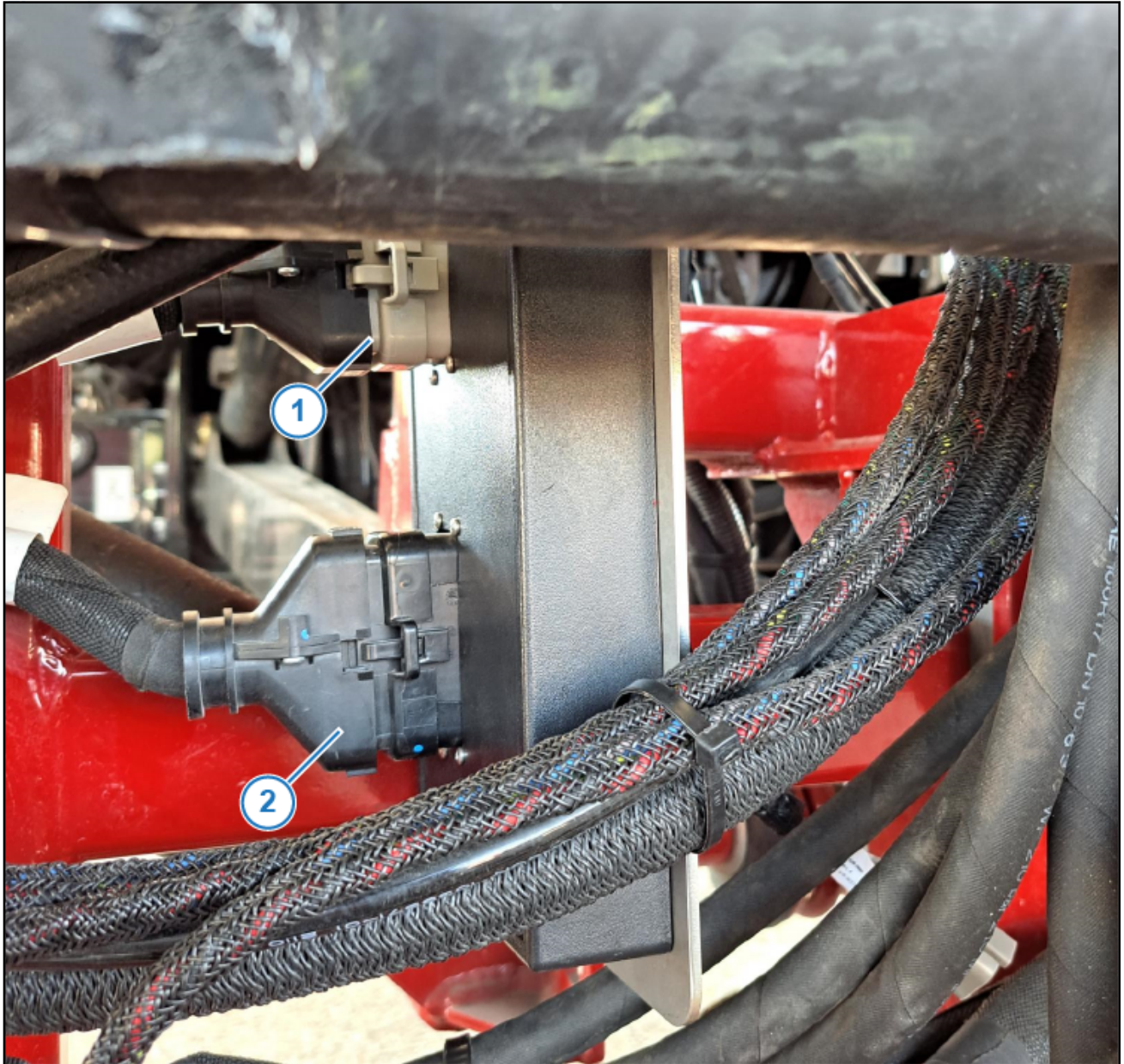


Figure 3: RCM Adapter Machine Harness Connections

4. Plug the machine J1 (Figure 3, Item 1) and J3 (Figure 3, Item 2) connectors into the RCM Adapter as shown.

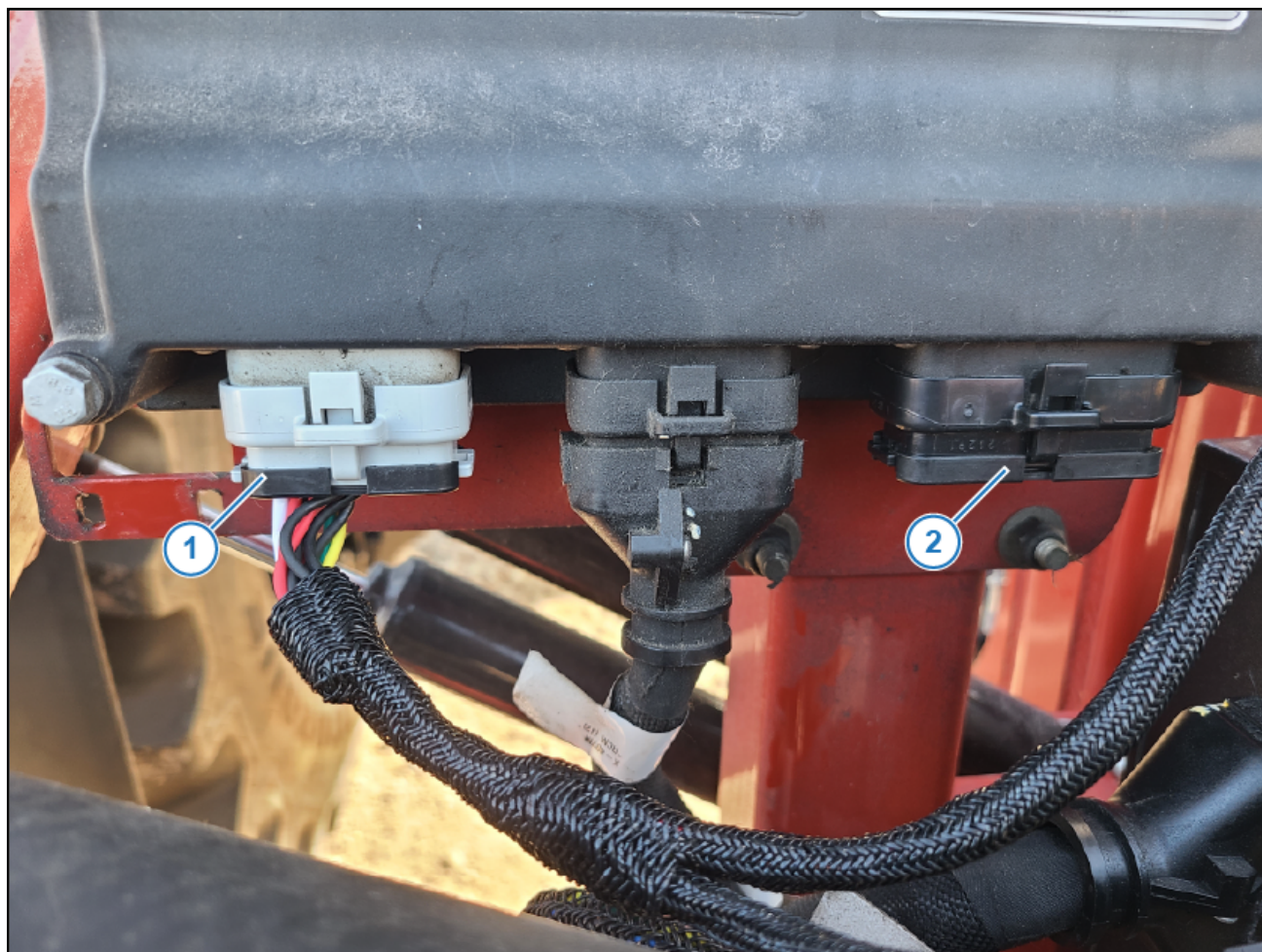


Figure 4: Chassis Harness RCM Connection

5. Insert the J1 plug from the RCM Adapter Harness (P/N 123100-044) into the machine's RCM (Figure 4, Item 1). Install a dust plug in the open RCM J3 port (Figure 4, Item 2).

Envelop Hub Installation



Figure 5: Envelop Hub Mounting Location

6. Mount the Envelop Hub on the center boom section as shown.

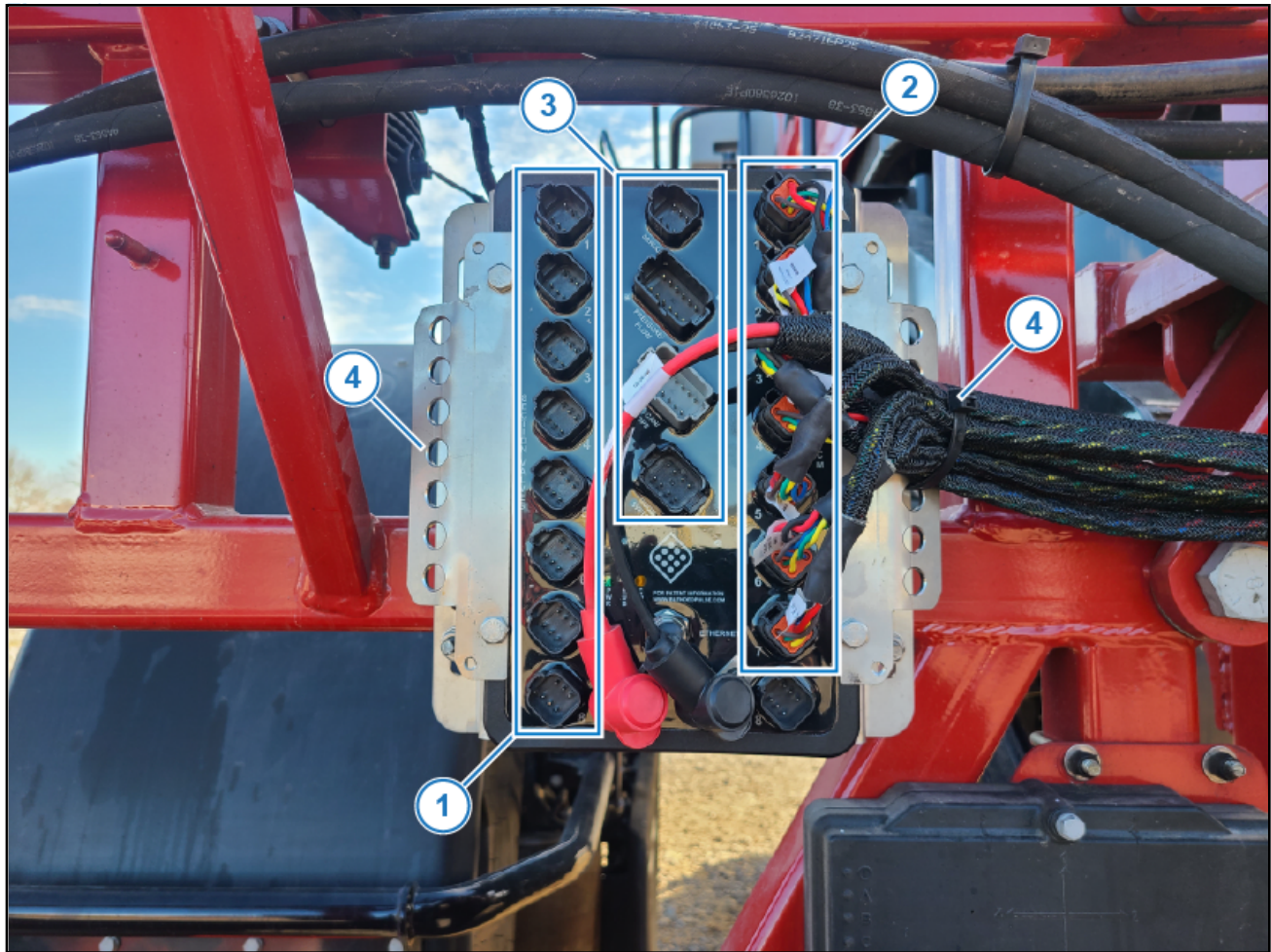


Figure 6: Envelop Hub Connections

7. Plug each Boom Shutoff Harness (Figure 6, Item 1) and VCM Extension Harness (Figure 6, Item 2) connector into their appropriately labeled ports on the Envelop Hub.
8. Plug the Chassis Harness into the Envelop Hub's Servo, Pressure/Flow, and ISOCAN/GPS ports (Figure 6, Item 3).
9. Insert dust plugs into unused ports.
10. Zip tie harnesses to strain relief brackets (Figure 6, Item 4) so that there is a small amount of slack in the hub side wiring.

RCM Relay Box Installation

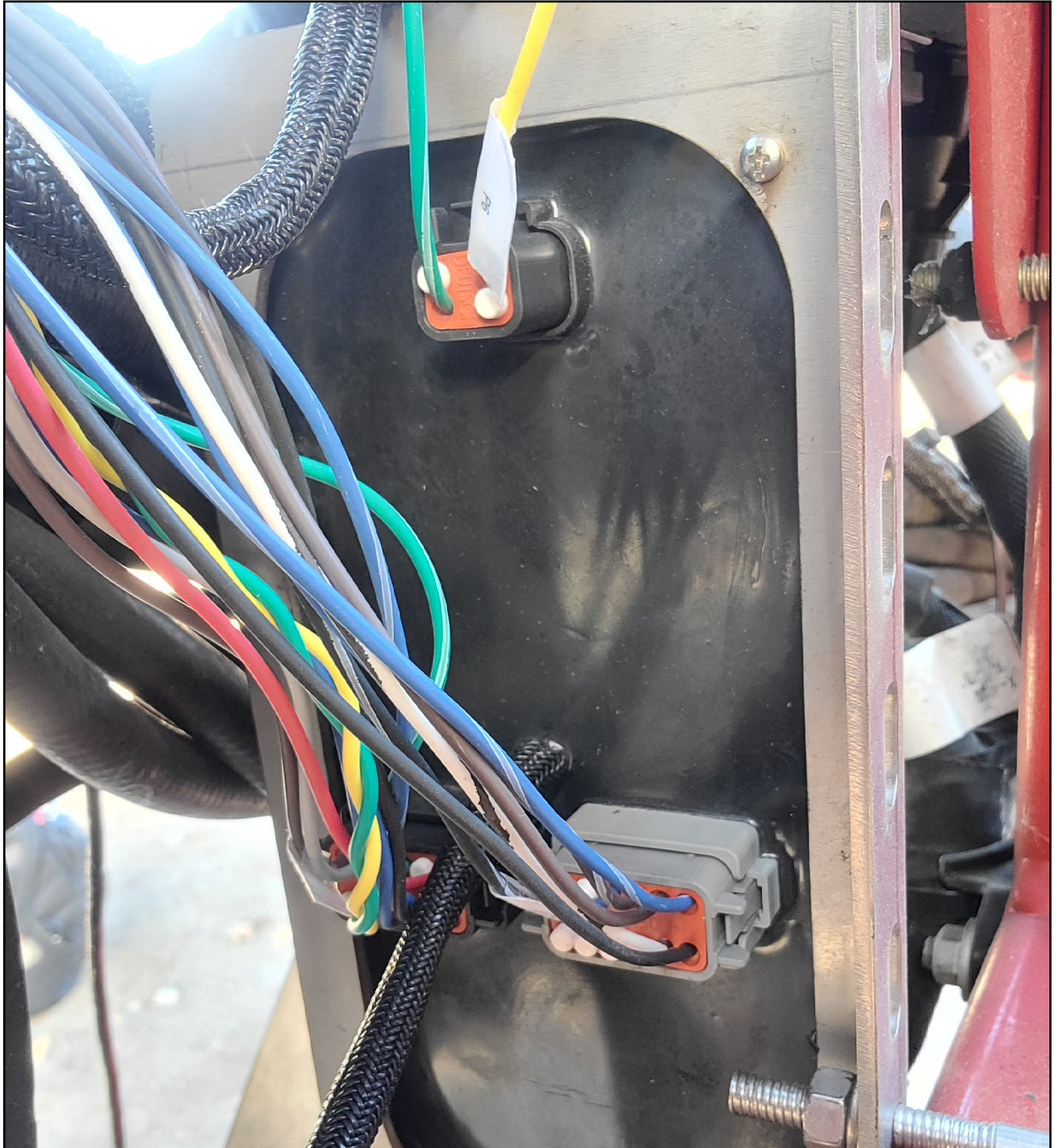


Figure 7: RCM Adapter Chassis Harness Connections

11. Make the three Chassis Harness connections to the RCM adapter.

RCM Relay Box Installation

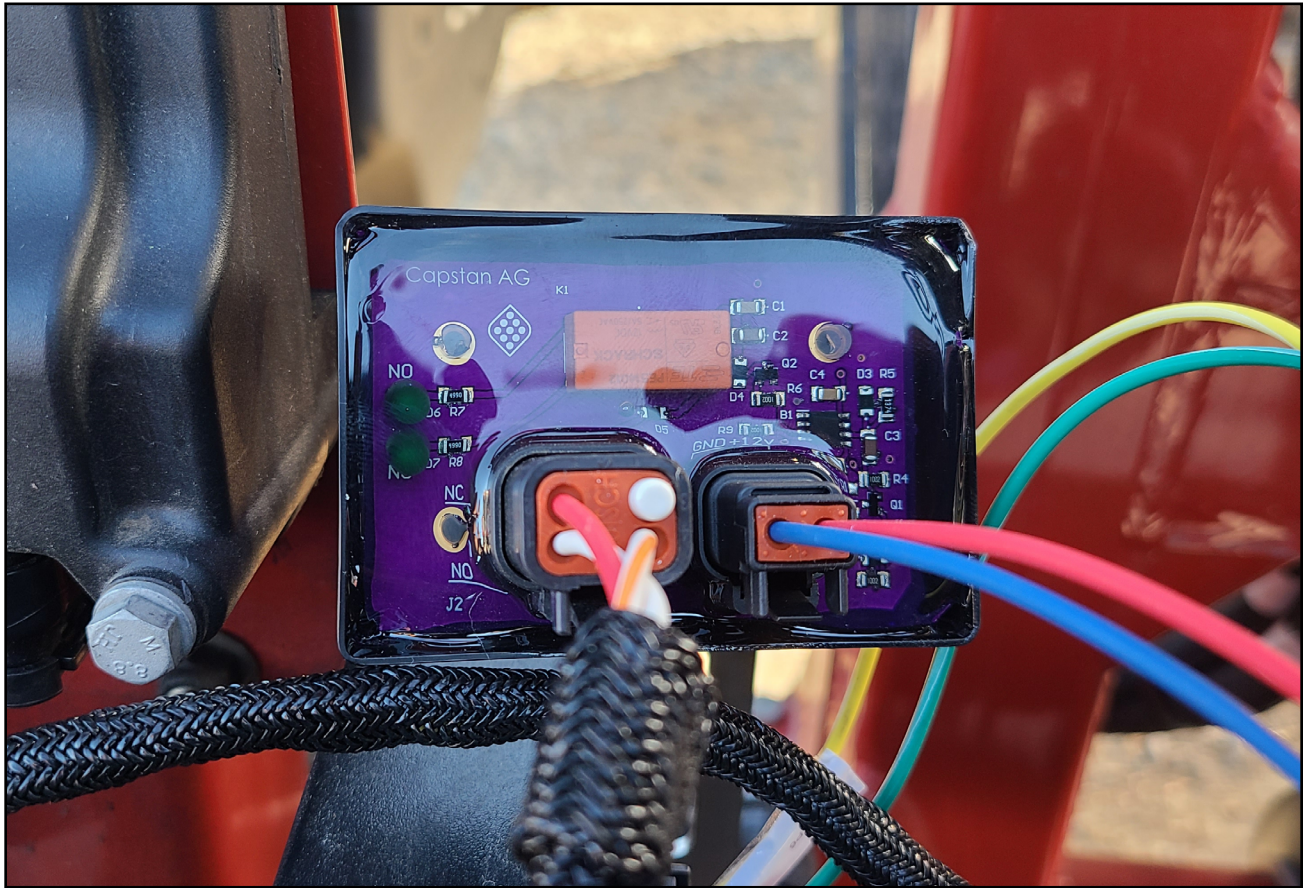


Figure 8: Horizontal Mounting Bracket Installation

12. Plug the 2-pin and 4-pin connectors from the Chassis Harness into the RCM Relay box and use zip ties to secure it with the rest of the harness.

Chassis Harness Routing



Figure 9: Chassis Harness Routing

13. Route the Chassis Harness (Figure 9, Item 1) along the boom support and under the machine as shown.

Chassis Harness Connections

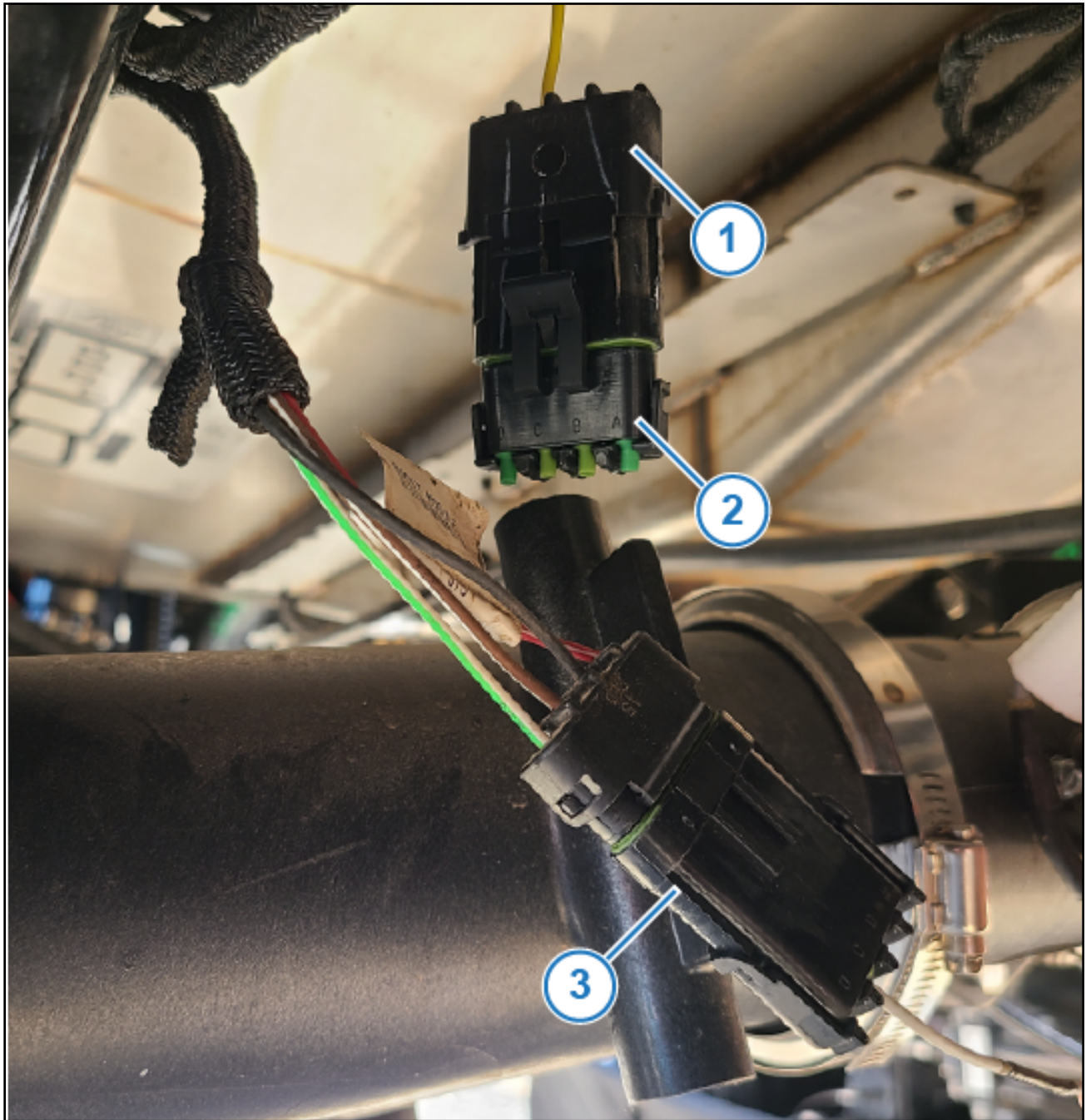


Figure 10: Boost Module Connector

14. Locate the 4-pin Boost Module connector (Figure 10, Item 1) under the machine. Disconnect it and install a dust cap (Figure 10, Item 2).
15. Plug the 4-pin Chassis Harness connector (Figure 10, Item 3) into the machine connector as shown.
16. Secure the harness under the machine with zipties as needed.

Power Harness Connections

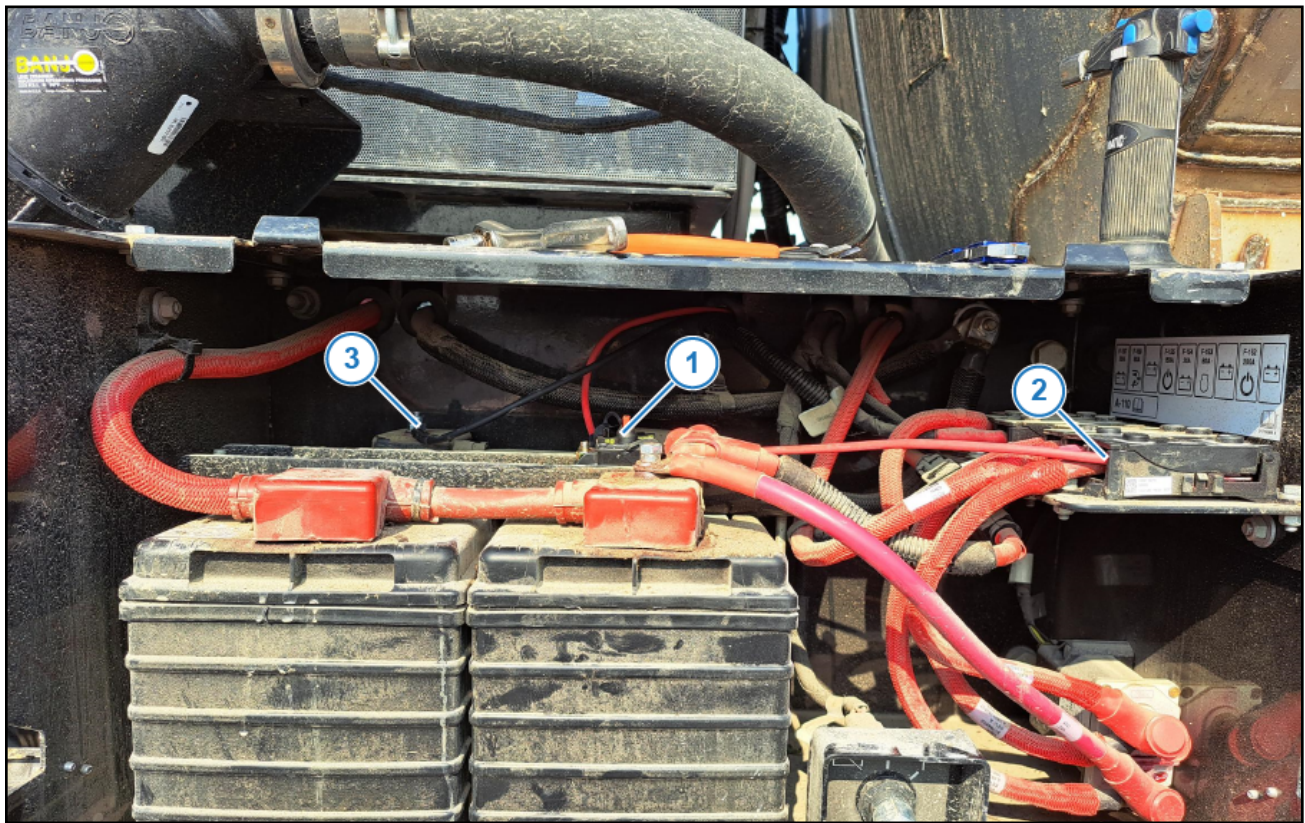


Figure 11: Power Harness Connections

17. Connect the power and ground cables of the Power Harness to the corresponding lugs on the Envelop Hub and route it along with the Chassis Harness under the machine and to the battery box on the right side of the machine.
18. Install the circuit breaker box (Figure 11, Item 1) in line with the positive cable and connect it to the positive lug on the machine power distribution block (Figure 11, Item 2) as shown.
19. Connect the negative cable (Figure 11, Item 3) to the ground lug on the machine battery or other suitable ground location in the battery box area.
20. Close the machine main circuit breaker and set up the PinPoint III system in accordance with 123000-228, Case IH PP3 Integration, available at capstanag.com/pinpoint-iii-envelop.