



# PinPoint™ II

## AGCO Field Installation

Configurations:  
RG C Series Sprayers  
2018 and after

# Installation Guide



# Chapter 1: Safety

---

## Signal Words

---



**DANGER:** Indicates an imminent hazard which, if not avoided, will result in death or serious injury. This signal word is limited to the most extreme situations, typically for machine components that, for functional purposes, cannot be guarded.



**Warning:** Indicates a potential hazard which, if not avoided, could result in death or serious injury, and includes hazards that are exposed when guards are removed. It may also be used to alert against unsafe practices.



**CAUTION:** Indicates a potential hazard which, if not avoided, may result in minor or moderate injury. It may also be used to alert against unsafe practices.

**Important:** This is used to draw attention to specific information that is necessary for the operation, setup, or service of the system.

**Note:** This is used for additional information that can help understand or operate the system.

## Emergency Safety

---

Fire extinguishing systems must meet the applicable OSHA requirements, and all users of portable/fixed fire suppression equipment must know the types, limitations, and proper uses of this equipment; including hazards involved with incipient stage firefighting.

Keep emergency numbers for doctors, ambulance service, hospital, and fire department near your telephone.

Know the location of fire extinguishers and first aid kits and how to use them.

Inspect the fire extinguisher and service the fire extinguisher regularly.

Follow the recommendations on the instructions plate.

Very small fires can be put out (extinguished) with a fire extinguisher. Use an appropriate method to extinguish a fire (water for paper fires, and chemical extinguishers for electrical or chemical fires).

## Pressurized Fluid Lines

---

Do not heat by welding, soldering, or using a torch near pressurized fluid lines or other flammable materials. Pressurized lines can accidentally burst when too much heat is present.

## Personal Protective Equipment

---

Wear close-fitting clothing and the correct personal protective equipment (PPE) for the job. See the manufacturer's manual or other information for correct PPE.

## Battery Safety

---

Use the procedure in the appropriate agricultural equipment manual for connecting, disconnecting, and jump-starting the machine's battery.

Keep sparks and flames away from the battery. Battery gas can explode and cause serious injury. Do not smoke in the battery charging area.

Remove jewelry, which might make electrical contact and create sparks.

---

## Chemical Safety

---

Chemicals used in agricultural applications can be harmful to your health and/or the environment if not used correctly. Always follow all label directions for effective, safe, and legal use of agricultural chemicals.

## Chapter 2: Before System Installation

---

Before assembly and installation, read the installation information carefully. Make sure that you have all of the parts in the kits. Read all of the instructions in this document, the system operator manual, and the machine manuals. The system operator manual includes information on operation, adjustments, troubleshooting, and maintenance.

For further assistance contact your CapstanAG representative.



## Chapter 3: Boom Kit

### Parts List for the Boom Kits

#### 90 ft Boom with 10 in Spacing—930074D2/AG30013

CapstanAG Part Number	AGCO Parts List	Description	Qty
118400-137	AG429902	15-Nozzle/10-in Spacing VCM Assembly	5
118400-136	AG429901	9-Nozzle/10-in Spacing VCM Assembly	4
118650-005	AG429341	5 ft/6-Conductor Extension	1
118650-010	AG429342	10 ft/6-Conductor Extension	1
118650-015	AG429343	15 ft/6-Conductor Extension	1
118650-025	AG429345	25 ft/6-Conductor Extension	1
118650-030	AG429346	30 ft/6-Conductor Extension	1
118650-035	AG429347	35 ft/6-Conductor Extension	1
118650-040	AG429348	40 ft/6-Conductor Extension	1
118650-045	AG429349	45 ft/6-Conductor Extension	1
118650-050	AG429350	50 ft/6-Conductor Extension	1
118673-001		5 ft/2-Conductor Extension	2
122100-001	AG429361	CapView II Display	1
122101-025	AG429362	PinPoint II Gateway Hub	1
122101-104	AG429363	PinPoint II Gateway Hub Cover	1
706530-347		2-Pin DT Dust Plug	1
706530-356		12-Pin DT Dust Plug	1
706530-348		6-Pin DT Dust Plug	2
116200-045		2-Pin Tower WP Dust Plug	10
118640-040		PinPoint Key Fob	1
122015-001	AG429360	PinPoint II Thumb Drive	1
142290-242	AG430025	Left-hand A24/12 Watt AGCO Nozzle Body Assembly	2
142290-241	AG430024	Right-hand A24/12 Watt AGCO Nozzle Body Assembly	105
118640-200	AG429905	SIM Box Assembly	1

## 90 ft Boom with 15 in Spacing—930075D2/AG30014

CapstanAG Part Number	AGCO Parts List	Description	Qty
118400-125	AG429897	15-Nozzle/15-in Spacing VCM Assembly	4
118400-135	AG429900	9-Nozzle/15-in Spacing VCM Assembly	3
118650-005	AG429341	5 ft/6-Conductor Extension	1
118650-010	AG429342	10 ft/6-Conductor Extension	1
118650-015	AG429343	15 ft/6-Conductor Extension	1
118650-020	AG429344	20 ft/6-Conductor Extension	1
118650-025	AG429345	25 ft/6-Conductor Extension	1
118650-035	AG429347	35 ft/6-Conductor Extension	1
118650-040	AG429348	40 ft/6-Conductor Extension	1
122100-001	AG429361	CapView II Display	1
122101-025	AG429362	PinPoint II Gateway Hub	1
122101-104	AG429363	PinPoint II Gateway Hub Cover	1
706530-347		2-Pin DT Dust Plug	1
706530-356		12-Pin DT Dust Plug	1
706530-348		6-Pin DT Dust Plug	4
116200-045		2-Pin Tower WP Dust Plug	16
118640-040		PinPoint Key Fob	1
122015-001	AG429360	PinPoint II Thumb Drive	1
142290-242	AG430025	Left-hand A24/12 Watt AGCO Nozzle Body Assembly	2
142290-241	AG430024	Right-hand A24/12 Watt AGCO Nozzle Body Assembly	69
118640-200	AG429905	SIM Box Assembly	1

## 90 ft Boom with 20 in Spacing—930076D2/AG30015

CapstanAG Part Number	AGCO Parts List	Description	Qty
118400-126	AG429898	15-Nozzle/20-in Spacing VCM Assembly	2
118400-134	AG429899	9-Nozzle/20-in Spacing VCM Assembly	3
118650-005	AG429341	5 ft/6-Conductor Extension	1
118650-010	AG429342	10 ft/6-Conductor Extension	1
118650-015	AG429343	15 ft/6-Conductor Extension	1
118650-035	AG429347	35 ft/6-Conductor Extension	1



CapstanAG Part Number	AGCO Parts List	Description	Qty
118650-040	AG429348	40 ft/6-Conductor Extension	1
122100-001	AG429361	CapView II Display	1
122101-025	AG429362	PinPoint II Gateway Hub	1
122101-104	AG429363	PinPoint II Gateway Hub Cover	1
142290-241	AG430024	Right-hand A24/12 Watt AGCO Nozzle Body Assembly	54
706530-347		2-Pin DT Dust Plug	1
706530-356		12-Pin DT Dust Plug	1
706530-348		6-Pin DT Dust Plug	6
116200-045		2-Pin Tower WP Dust Plug	3
118640-040		PinPoint Key Fob	1
122015-001	AG429360	PinPoint II Thumb Drive	1
118640-200	AG429905	SIM Box Assembly	1

## 100 ft Boom with 10 in Spacing—930077D2/AG30016

CapstanAG Part Number	AGCO Parts List	Description	Qty
118400-137	AG429902	15-Nozzle/10-in Spacing VCM Assembly	7
118400-136	AG429901	9-Nozzle/10-in Spacing VCM Assembly	2
118650-005	AG429341	5 ft/6-Conductor Extension	1
118650-010	AG429342	10 ft/6-Conductor Extension	1
118650-015	AG429343	15 ft/6-Conductor Extension	1
118650-025	AG429345	25 ft/6-Conductor Extension	1
118650-030	AG429346	30 ft/6-Conductor Extension	1
118650-035	AG429347	35 ft/6-Conductor Extension	1
118650-040	AG429348	40 ft/6-Conductor Extension	1
118650-045	AG429349	45 ft/6-Conductor Extension	1
118650-050	AG429350	50 ft/6-Conductor Extension	1
118673-001		5 ft/2-Conductor Extension	2
122100-001	AG429361	CapView II Display	1
122101-025	AG429362	PinPoint II Gateway Hub	1
122101-104	AG429363	PinPoint II Gateway Hub Cover	1
706530-347		2-Pin DT Dust Plug	1

CapstanAG Part Number	AGCO Parts List	Description	Qty
706530-356		12-Pin DT Dust Plug	1
706530-348		6-Pin DT Dust Plug	2
116200-045		2-Pin Tower WP Dust Plug	4
118640-040		PinPoint Key Fob	1
122015-001	AG429360	PinPoint II Thumb Drive	1
142290-242	AG430025	Left-hand A24/12 Watt AGCO Nozzle Body Assembly	2
142290-241	AG430024	Right-hand A24/12 Watt AGCO Nozzle Body Assembly	117
118640-200	AG429905	SIM Box Assembly	1

## 100 ft Boom with 15 in Spacing—930078D2/AG30017

CapstanAG Part Number	AGCO Parts List	Description	Qty
118400-125	AG429897	15-Nozzle/15-in Spacing VCM Assembly	4
118400-135	AG429900	9-Nozzle/15-in Spacing VCM Assembly	3
118650-005	AG429341	5 ft/6-Conductor Extension	1
118650-010	AG429342	10 ft/6-Conductor Extension	1
118650-015	AG429343	15 ft/6-Conductor Extension	1
118650-020	AG429344	20 ft/6-Conductor Extension	1
118650-025	AG429345	25 ft/6-Conductor Extension	1
118650-035	AG429347	35 ft/6-Conductor Extension	1
118650-040	AG429348	40 ft/6-Conductor Extension	1
122100-001	AG429361	CapView II Display	1
122101-025	AG429362	PinPoint II Gateway Hub	1
122101-104	AG429363	PinPoint II Gateway Hub Cover	1
706530-347		2-Pin DT Dust Plug	1
706530-356		12-Pin DT Dust Plug	1
706530-348		6-Pin DT Dust Plug	4
116200-045		2-Pin Tower WP Dust Plug	8
118640-040		PinPoint Key Fob	1
122015-001	AG429360	PinPoint II Thumb Drive	1
142290-242	AG430025	Left-hand A24/12 Watt AGCO Nozzle Body Assembly	2

CapstanAG Part Number	AGCO Parts List	Description	Qty
142290-241	AG430024	Right-hand A24/12 Watt AGCO Nozzle Body Assembly	77
118640-200	AG429905	SIM Box Assembly	1

## 100 ft Boom with 20 in Spacing—930079D2/AG30018

CapstanAG Part Number	AGCO Parts List	Description	Qty
118400-126	AG429898	15-Nozzle/20-in Spacing VCM Assembly	4
118400-134	AG429899	9-Nozzle/20-in Spacing VCM Assembly	1
118650-005	AG429341	5 ft/6-Conductor Extension	1
118650-010	AG429342	10 ft/6-Conductor Extension	1
118650-015	AG429343	15 ft/6-Conductor Extension	1
118650-035	AG429347	35 ft/6-Conductor Extension	1
118650-040	AG429348	40 ft/6-Conductor Extension	1
122100-001	AG429361	CapView II Display	1
122101-025	AG429362	PinPoint II Gateway Hub	1
122101-104	AG429363	PinPoint II Gateway Hub Cover	1
142290-241	AG430024	Right-hand A24/12 Watt AGCO Nozzle Body Assembly	60
706530-347		2-Pin DT Dust Plug	1
706530-356		12-Pin DT Dust Plug	1
706530-348		6-Pin DT Dust Plug	6
116200-045		2-Pin Tower WP Dust Plug	9
118640-040		PinPoint Key Fob	1
122015-001	AG429360	PinPoint II Thumb Drive	1
118640-200	AG429905	SIM Box Assembly	1

## 120 ft Boom with 10 in Spacing—930080D2/AG30019

CapstanAG Part Number	AGCO Parts List	Description	Qty
118400-137	AG429902	15-Nozzle/10-in Spacing VCM Assembly	5
118400-136	AG429901	9-Nozzle/10-in Spacing VCM Assembly	8
118650-005	AG429341	5 ft/6-Conductor Extension	1
118650-010	AG429342	10 ft/6-Conductor Extension	5
118650-015	AG429343	15 ft/6-Conductor Extension	1

CapstanAG Part Number	AGCO Parts List	Description	Qty
118650-025	AG429345	25 ft/6-Conductor Extension	1
118650-030	AG429346	30 ft/6-Conductor Extension	1
118650-040	AG429348	40 ft/6-Conductor Extension	1
118650-045	AG429349	45 ft/6-Conductor Extension	1
118650-055	AG429351	55 ft/6-Conductor Extension	1
118650-060	AG429352	60 ft/6-Conductor Extension	1
118640-032	AG430066	6-Conductor Y-adapter	4
122100-001	AG429361	CapView II Display	1
122101-025	AG429362	PinPoint II Gateway Hub	1
122101-104	AG429363	PinPoint II Gateway Hub Cover	1
142290-241	AG430024	Right-hand A24/12 Watt AGCO Nozzle Body Assembly	139
706530-347		2-Pin DT Dust Plug	1
706530-356		12-Pin DT Dust Plug	1
706530-348		6-Pin DT Dust Plug	2
116200-045		2-Pin Tower WP Dust Plug	4
118640-040		PinPoint Key Fob	1
122015-001	AG429360	PinPoint II Thumb Drive	1
142290-242	AG430025	Left-hand A24/12 Watt AGCO Nozzle Body Assembly	4
118640-200	AG429905	SIM Box Assembly	1

## 120 ft Boom with 15 in Spacing—930081D2/AG30020

CapstanAG Part Number	AGCO Parts List	Description	Qty
118400-125	AG429897	15-Nozzle/15-in Spacing VCM Assembly	4
118400-135	AG429900	9-Nozzle/15-in Spacing VCM Assembly	5
118650-005	AG429341	5 ft/6-Conductor Extension	1
118650-010	AG429342	10 ft/6-Conductor Extension	1
118650-015	AG429343	15 ft/6-Conductor Extension	1
118650-025	AG429345	25 ft/6-Conductor Extension	1
118650-030	AG429346	30 ft/6-Conductor Extension	1
118650-040	AG429348	40 ft/6-Conductor Extension	1
118650-045	AG429349	45 ft/6-Conductor Extension	1

CapstanAG Part Number	AGCO Parts List	Description	Qty
118650-050	AG429350	50 ft/6-Conductor Extension	1
118650-055	AG429351	55 ft/6-Conductor Extension	1
122100-001	AG429361	CapView II Display	1
122101-025	AG429362	PinPoint II Gateway Hub	1
122101-104	AG429363	PinPoint II Gateway Hub Cover	1
142290-241	AG430024	Right-hand A24/12 Watt AGCO Nozzle Body Assembly	93
706530-347		2-Pin DT Dust Plug	1
706530-356		12-Pin DT Dust Plug	1
706530-348		6-Pin DT Dust Plug	2
116200-045		2-Pin Tower WP Dust Plug	10
118640-040		PinPoint Key Fob	1
122015-001	AG429360	PinPoint II Thumb Drive	1
142290-242	AG430025	Left-hand A24/12 Watt AGCO Nozzle Body Assembly	2
118640-200	AG429905	SIM Box Assembly	1

## 120 ft Boom with 20 in Spacing—930082D2/AG30021

CapstanAG Part Number	AGCO Parts List	Description	Qty
118400-134	AG429899	9-Nozzle/20-in Spacing VCM Assembly	9
118650-005	AG429341	5 ft/6-Conductor Extension	1
118650-010	AG429342	10 ft/6-Conductor Extension	1
118650-015	AG429343	15 ft/6-Conductor Extension	1
118650-020	AG429344	20 ft/6-Conductor Extension	1
118650-025	AG429345	25 ft/6-Conductor Extension	1
118650-040	AG429348	40 ft/6-Conductor Extension	1
118650-045	AG429349	45 ft/6-Conductor Extension	1
118650-050	AG429350	50 ft/6-Conductor Extension	1
118650-055	AG429351	55 ft/6-Conductor Extension	1
122100-001	AG429361	CapView II Display	1
122101-025	AG429362	PinPoint II Gateway Hub	1
122101-104	AG429363	PinPoint II Gateway Hub Cover	1
142290-241	AG430024	Right-hand A24/12 Watt AGCO Nozzle Body Assembly	70

CapstanAG Part Number	AGCO Parts List	Description	Qty
706530-347		2-Pin DT Dust Plug	1
706530-356		12-Pin DT Dust Plug	1
706530-348		6-Pin DT Dust Plug	2
116200-045		2-Pin Tower WP Dust Plug	9
118640-040		PinPoint Key Fob	1
122015-001	AG429360	PinPoint II Thumb Drive	1
142290-242	AG430025	Left-hand A24/12 Watt AGCO Nozzle Body Assembly	2
118640-200	AG429905	SIM Box Assembly	1

## 120 ft Aluminum Boom with 20 in Spacing—930083D2/ AG30022

CapstanAG Part Number	AGCO Parts List	Description	Qty
118400-134	AG429899	9-Nozzle/20-in Spacing VCM Assembly	7
118400-138	AG429903	4 and 5-Nozzle/20-in Spacing VCM Assembly	2
118650-005	AG429341	5 ft/6-Conductor Extension	1
118650-010	AG429342	10 ft/6-Conductor Extension	1
118650-015	AG429343	15 ft/6-Conductor Extension	1
118650-025	AG429345	25 ft/6-Conductor Extension	1
118650-030	AG429346	30 ft/6-Conductor Extension	1
118650-040	AG429348	40 ft/6-Conductor Extension	1
118650-045	AG429349	45 ft/6-Conductor Extension	1
118650-050	AG429350	50 ft/6-Conductor Extension	1
118650-055	AG429351	55 ft/6-Conductor Extension	1
122100-001	AG429361	CapView II Display	1
122101-025	AG429362	PinPoint II Gateway Hub	1
122101-104	AG429363	PinPoint II Gateway Hub Cover	1
142290-241	AG430024	Right-hand A24/12 Watt AGCO Nozzle Body Assembly	72
706530-347		2-Pin DT Dust Plug	1
706530-356		12-Pin DT Dust Plug	1
706530-348		6-Pin DT Dust Plug	2
116200-045		2-Pin Tower WP Dust Plug	9

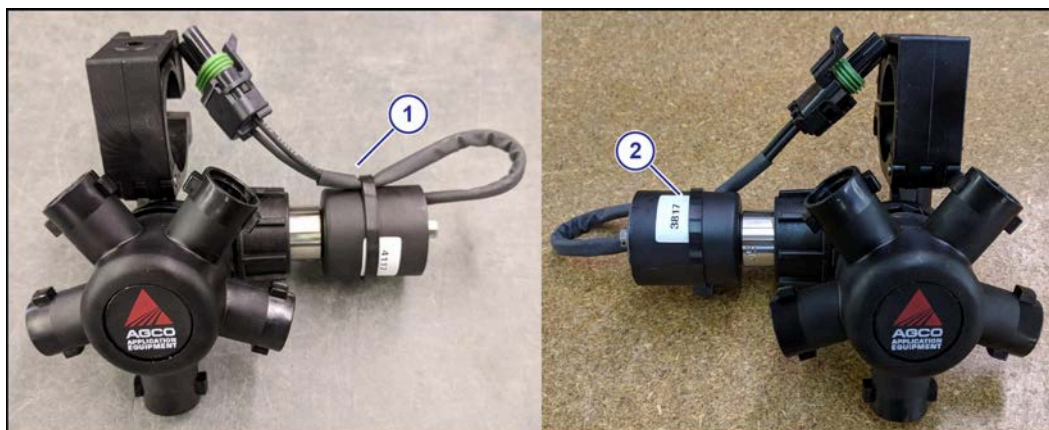
CapstanAG Part Number	AGCO Parts List	Description	Qty
118640-040		PinPoint Key Fob	1
122015-001	AG429360	PinPoint II Thumb Drive	1
118640-200	AG429905	SIM Box Assembly	1

## 132 ft Aluminum Boom with 20 in Spacing—930084D2/AG30023

CapstanAG Part Number	AGCO Parts List	Description	Qty
118400-134	AG429899	9-Nozzle/20-in Spacing VCM Assembly	7
118400-126	AG429898	15-Nozzle/20-in Spacing VCM Assembly	2
118650-005	AG429341	5 ft/6-Conductor Extension	1
118650-010	AG429342	10 ft/6-Conductor Extension	1
118650-015	AG429343	15 ft/6-Conductor Extension	1
118650-025	AG429345	25 ft/6-Conductor Extension	1
118650-030	AG429346	30 ft/6-Conductor Extension	1
118650-040	AG429348	40 ft/6-Conductor Extension	1
118650-045	AG429349	45 ft/6-Conductor Extension	1
118650-050	AG429350	50 ft/6-Conductor Extension	1
118650-055	AG429351	55 ft/6-Conductor Extension	1
122100-001	AG429361	CapView II Display	1
122101-025	AG429362	PinPoint II Gateway Hub	1
122101-104	AG429363	PinPoint II Gateway Hub Cover	1
142290-241	AG430024	Right-hand A24/12 Watt AGCO Nozzle Body Assembly	80
706530-347		2-Pin DT Dust Plug	1
706530-356		12-Pin DT Dust Plug	1
706530-348		6-Pin DT Dust Plug	2
116200-045		2-Pin Tower WP Dust Plug	13
118640-040		PinPoint Key Fob	1
122015-001	AG429360	PinPoint II Thumb Drive	1
118640-200	AG429905	SIM Box Assembly	1



## Install the Boom Kit



**Fig. 1:**

1. Install the nozzle body/valve assemblies. There are right-hand (1) and left-hand (2) nozzle bodies/valve assemblies used during this installation.

Make sure that you know the locations of the left-hand nozzle body/valve assembly. The left-hand version is used for clearance reasons. Configurations that require a left-hand nozzle body/valve assembly include:

Configuration	Left-hand Nozzle Location	Boom Area
90 ft with 10 in Spacing	18, 48	Left Inner Boom
90 ft with 15 in Spacing	12, 32	Left Inner Boom
100 ft with 10 in Spacing	24, 54	Left Inner Boom
100 ft with 15 in Spacing	16, 36	Left Inner Boom
120 ft by 10 in Spacing	17, 34, 66, 11	Left Outer, Left Inner, Right Outer Boom
120 ft by 15 in Spacing	44, 74	Left Inner, Right Outer Boom
120 ft by 20 in Spacing	9, 56	Left Inner, Right Outer Boom

2. Install the VCMs.

Depending on the boom configuration, different VCMs may be installed. The part numbers include:

Nozzle Spacing	9-Nozzle VCM		15-Nozzle VCM	
	CapstanAG Part Number	AGCO Part Number	CapstanAG Part Number	AGCO Part Number
10 in	118400-136	AG429901	118400-137	AG429902
15 in	118400-135	AG429900	118400-125	AG429897
20 in	118400-134	AG429899	118400-126	AG429898
	118400-138	AG429903		
	Specific to 120 ft aluminum boom outer sections			

The specific boom configurations will have specific VCM placement requirements.



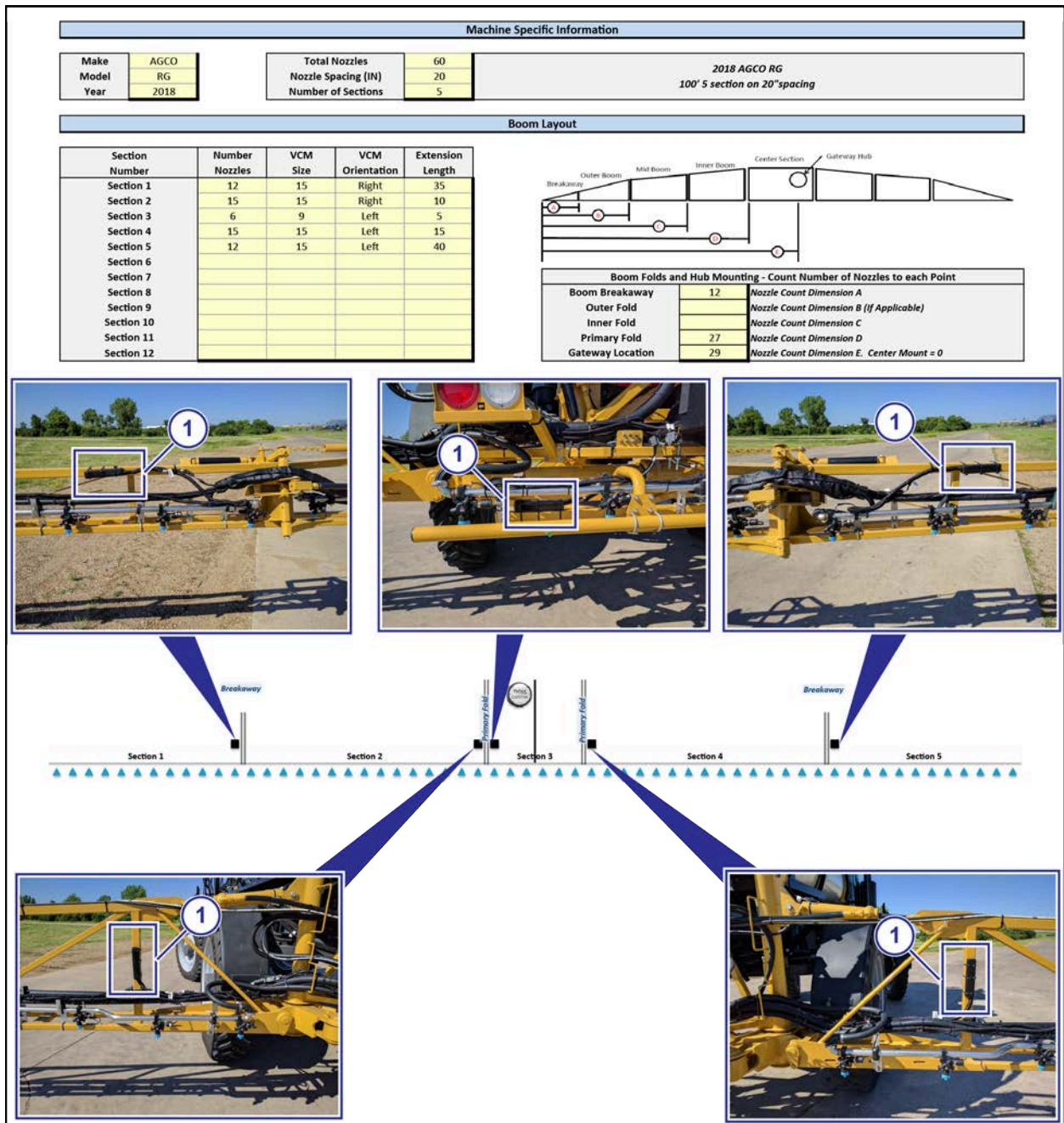


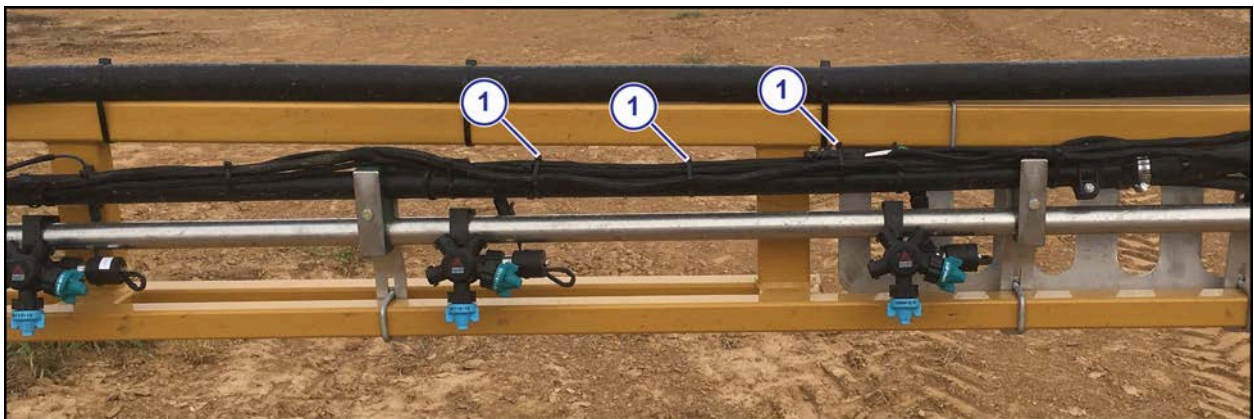
Fig. 2:

3. The VCM mounting locations (1), shown as the squares along the boom.



**Fig. 3:**

4. Secure each VCM to the boom structure with three heavy cable ties (1) on the body of the VCM.
5. Route the pigtail drops on the VCM harnesses away from each VCM and connect to each nozzle valve assembly (shown as small light blue arrows in Figure 14).  
Follow the boom plumbing or booms tubes as much as possible.



**Fig. 4:**

6. Where VCM nozzle drop harness and VCM CAN Extension wiring overlap, use a single cable tie (1) to secure them to the other electronic harnessing or plumbing every 10 in to 12 in.

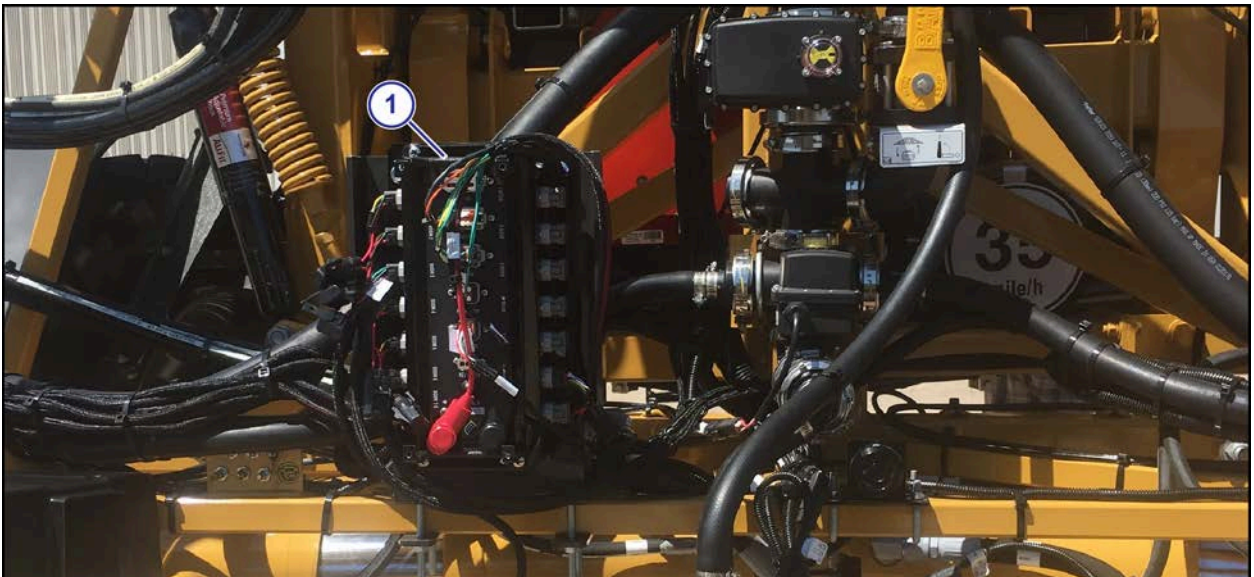




**Fig. 5:**

7. The pigtails (1) should be connected on the front side of the boom as shown.
8. Find the Marlin module enclosure located on the tree center section just left of the middle and remove the enclosure and module.

The J1 and J2 connectors that connect to the Marlin module are needed in Step 12.



**Fig. 6:**

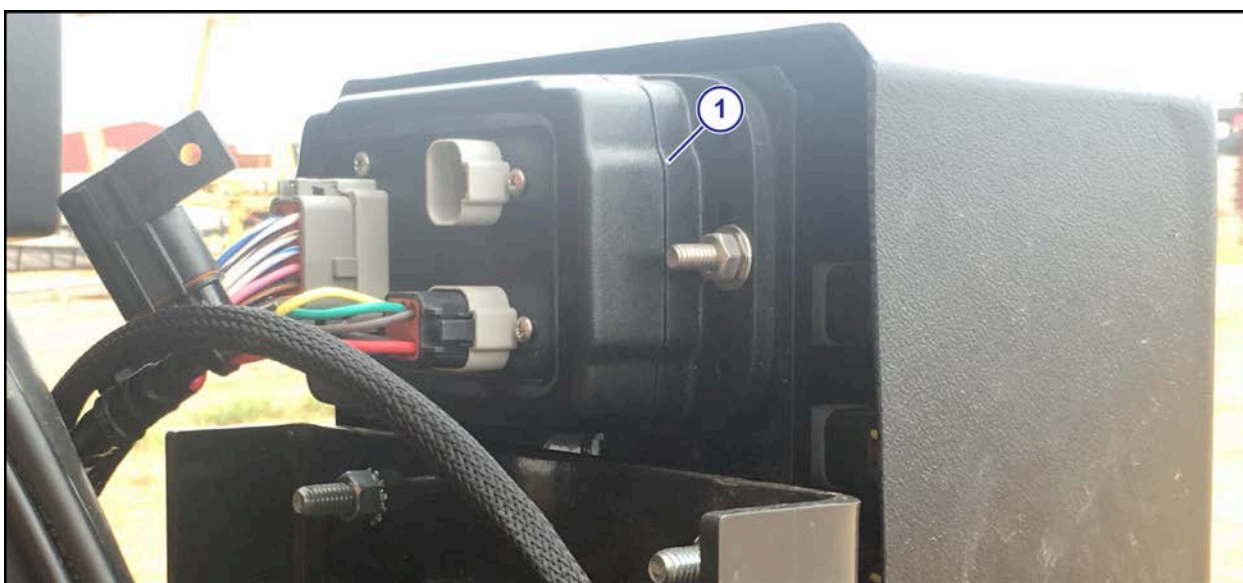
9. Mount the Gateway hub (1) in the same location the Marlin module was.

The Gateway Hub mount is installed as a part of the Tree/Center Kit.

10. Attach the Gateway Hub to this bracket using the supplied hardware with the power lugs located towards the bottom of the mount.

The Chassis Harness, Power Harness, Cab Extension Harness, SIM Module Harness, Boom Shutoff Harness, and Boom Extension Harnesses all plug into the Gateway Hub.

11. Route the harnesses so that they may be plugged into the hub in a way that will not promote water ingress into any connectors or terminals by routing wires using a drip loop where needed.
12. Connect the J1 and J2 connectors from the Marlin module harness to the chassis harness connectors labeled J1 and J2.
13. The 6-Pin CAN Extension harnesses are routed from the VCM to the center section following the other boom wiring.
14. Use the cable ties to secure the harnesses together, spaced 10 in to 12 in.
15. Excess wire should be gathered to the center section of the machine and looped together and secured with a cable tie allowing for adequate movement of the harnesses.
16. Then plug the harnesses into the appropriate port on the Gateway hub.



**Fig. 7:**

17. Mount the SIM module (1) on the back of the Gateway Hub using ¼-20 hex head screws, washers, and lock nuts.
18. The SIM module harness (P/N 118692-001/AG429906) is a part of the tree/center kit and is connected to the chassis harness and interfaces with the marlin module harness J1 and J2 connectors and are labeled.
19. The 6-pin connector on the SIM harness connects to the 6-pin port on the SIM module labeled CAN/PWR.
20. The PinPoint™ SIM shutoff harness, also included in the tree/center kit, connects to the 12-pin port on the SIM module.
21. The leads on the other end of the shutoff harness connect to the BOOM 1-6 and BOOM 7-12 ports on the Gateway Hub.
22. Install the hub cover.

## Chapter 4: Tree/Center Kit

### Parts List—930073D2/AG30012

CapstanAG Part Number	AGCO Part Number	Description	Qty
118657-001	AG430067	Pressure Sensor Adapter Harness	1
118703-010		Gateway Power Hub Mount Kit—1.25 Tube	1
118669-050	AG429355	Chassis Harness—AGCO Model Year 2018 and up	1
118669-052	AG429357	6 Conductor Cab Extension Harness—34.3 ft	1
118692-001	AG429906	AGCO Switch Interface Module (SIM) Harness	1
118606-059	AG429904	AGCOPinPoint™ SIM Shutoff Harness	1



## Install the Tree/Center Kit

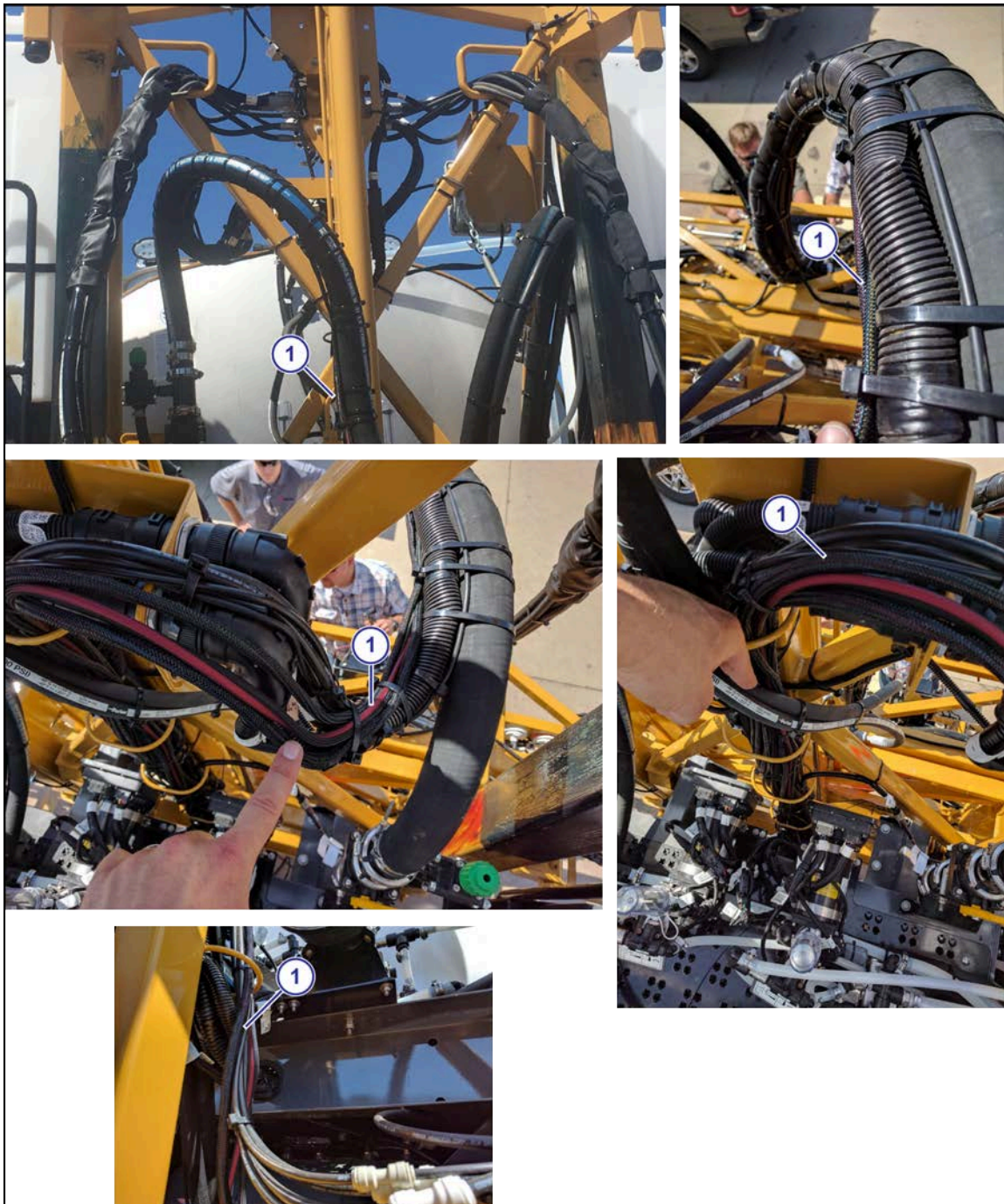
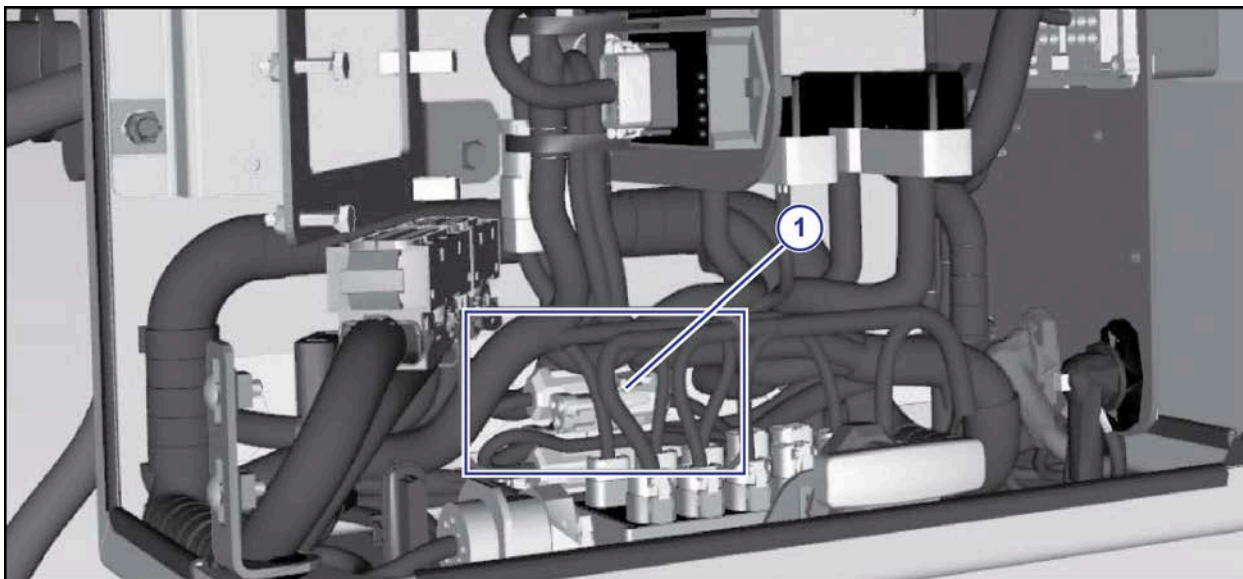


Fig. 8:

**Note:** A 90 ft boom is shown.

1. Route the chassis harness (1) along the other electrical harnesses and the liquid-supply product plumbing up through the center section and towards the catwalk at the rear of the machine.
2. Continue to follow the electrical plumbing through the metal rings down to the chassis cutout.

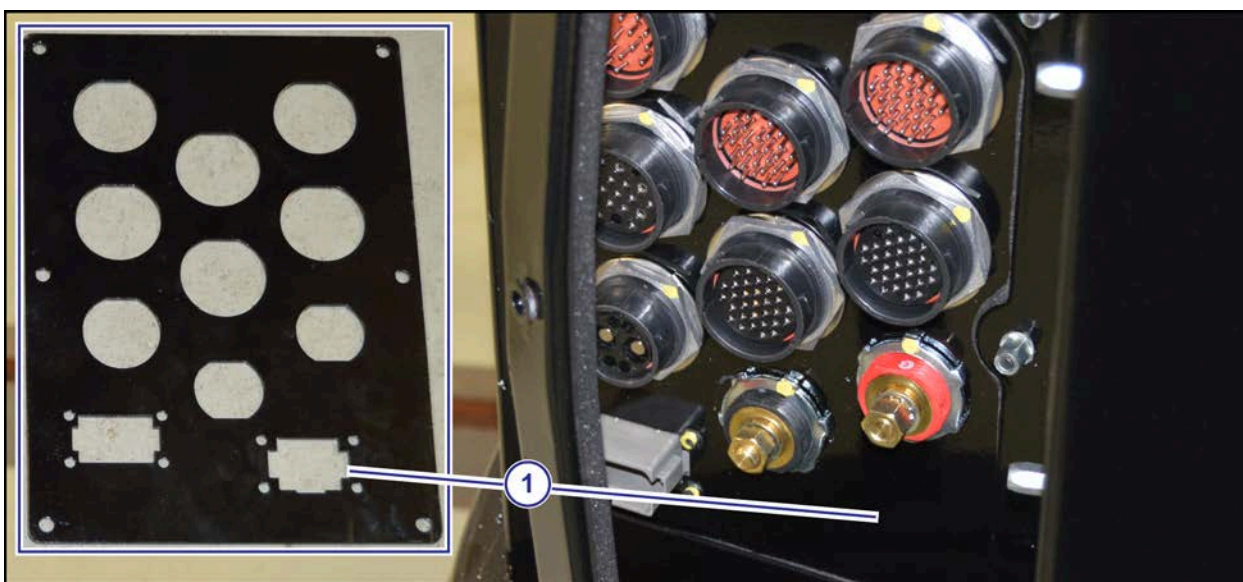


**Fig. 9:**

3. Follow the electrical plumbing to the right side of the machine and run along the electrical node/control box.
4. Route the two 6-pin connectors (1) into the node box.

The chassis harness tees into an existing connection.

- If the machine is configured for Raven control, tee the connectors between X0775 and X0777.
- If the machine is configured for AgControl (EXT), tee the connectors between X0775 and X0776.



**Fig. 10:**

The cab extension harness connects the Gateway hub to the connector on the rear corner of the cab.

5. Connect the 6-pin Deutsch DT male connector end into the Boom 12 port on the Gateway hub.
6. Route the cab extension harness like the chassis harness up through the center section and then down along the right side of the machine to the outside rear corner of the cab.
7. Connect the 8-pin Deutsch DT male connector (1).





## Chapter 5: System Power Kit

### Parts List—930072D1/AG29195

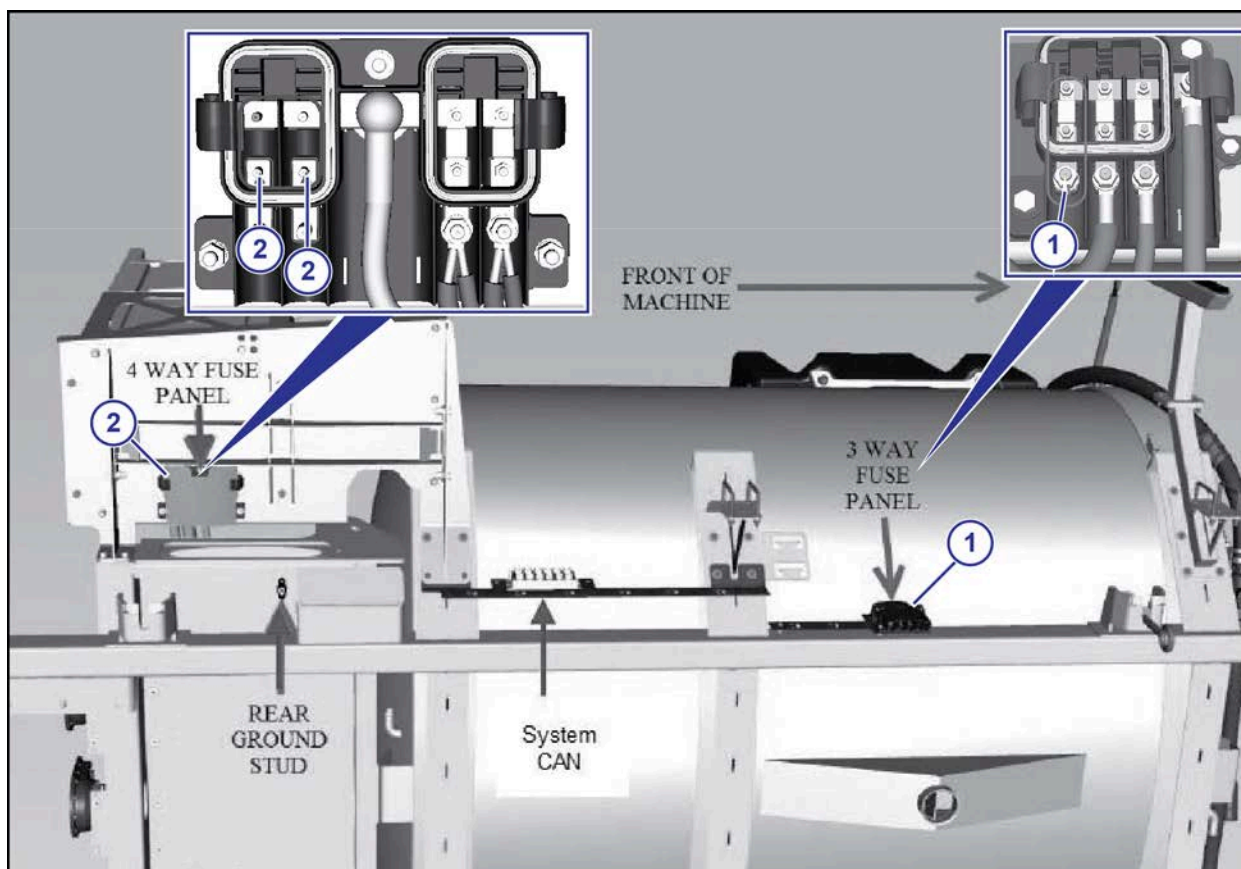
Capstan AG Part Number	AGCO Part Number	Description	Qty
930114D1	AG429368	AGCO Power Harness—25 ft	1
118655-010		Fuse Kit—100 A	1
705125-140		100 A Bolt-down Fuse	1
713600-007		M5 Split Lock Washer	2
713501-907		M5 Hex Nut	2
713501-908		M5 Flanged Hex Locknut	2
116301-011	AG429339	Pressure Sensor Kit	1
116301-010	AG429338	100 psi Pressure Sensor	1
620202-023		Pressure Sensor Harness	1

### Install the System Power Kit

#### Before you begin

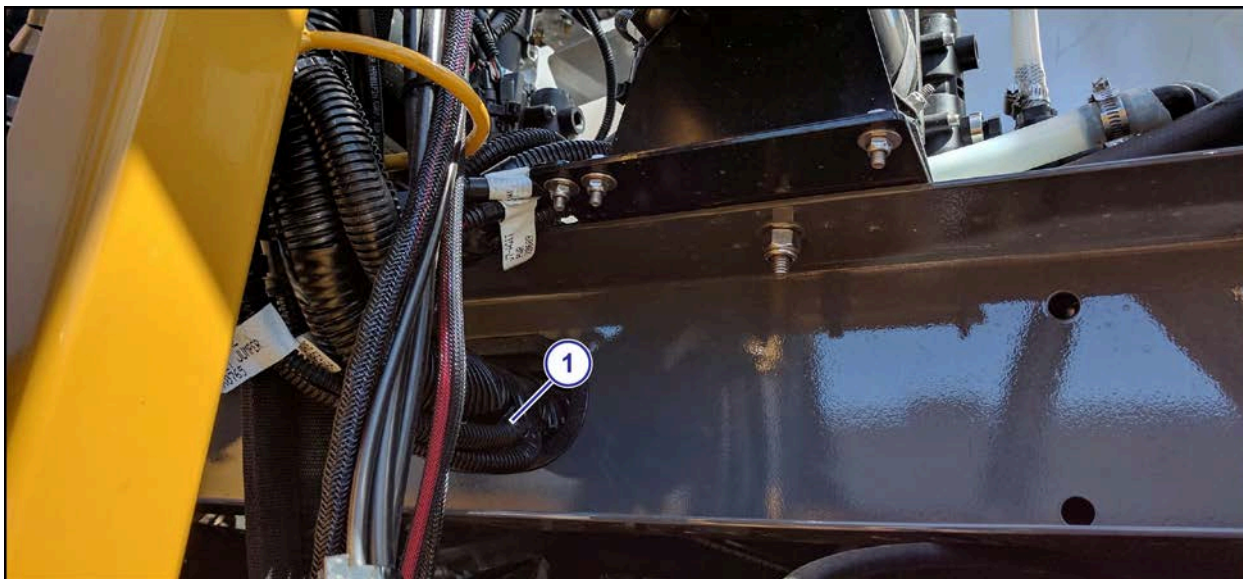
Before installation of the system power kit, make sure that you have installed the Gateway hub. See the installation instructions included in the hub mounting kit to install the hub mounting kit (PN 118703-010) for the AGCO RoGator Large Frame Mast.

The pressure sensor is installed using a separately ordered kit (PN 116301-012) and harness extension (PN 620202-016).



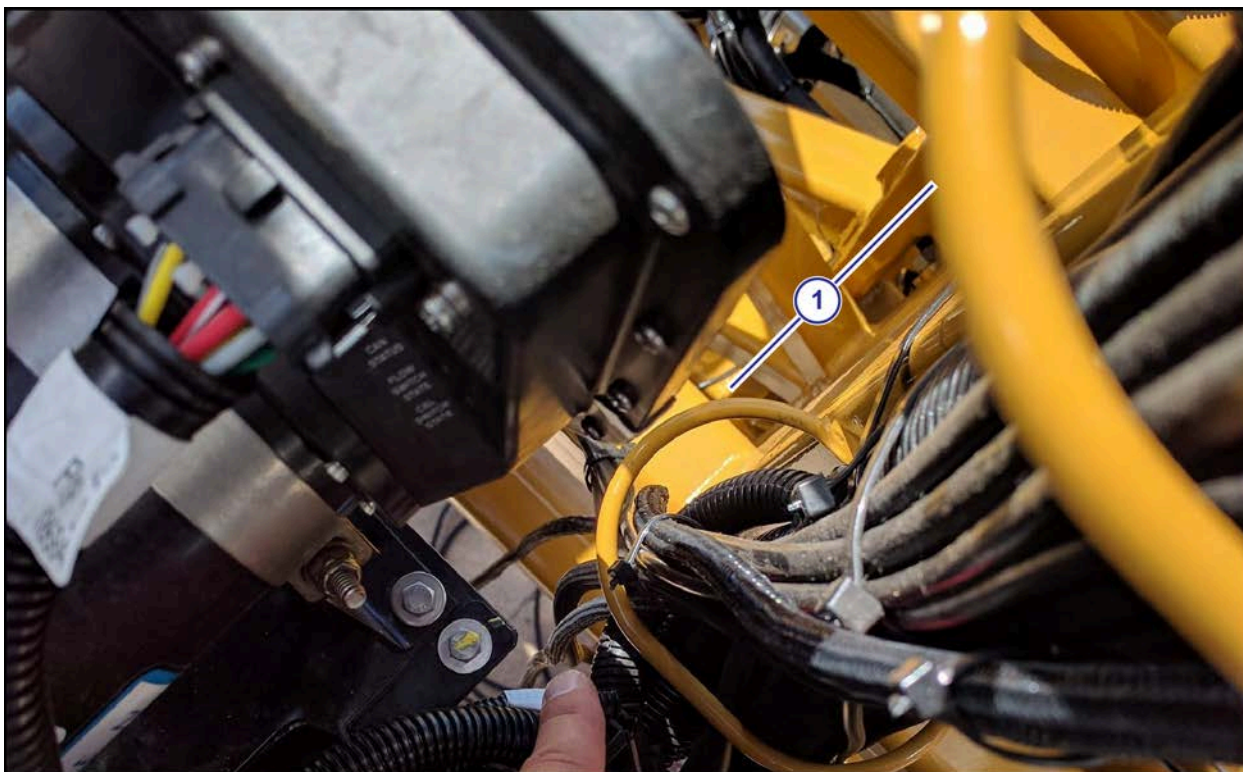
**Fig. 11:**

1. Install the 100 A Fuse.
  - In the three-way fuse panel (1).
  - If the machine has direct injection, in the four-way fuse panel (2).
2. Connect the power harness to the power lugs on the Gateway hub.
3. Route the power harness from the three-way fuse panel along the right side of the outer frame.  
If the machine has direct injection, route the power harness from the four-way fuse panel along the right side of the outer frame.
4. Connect the power wire to the power stud on the on the fuse block.  
On a three-way fuse, the power wire will reach and not have extra.  
On a direct injection four-way fuse, coil the access power wire and secure with a cable tie near the fuse block.
5. Attach the black (ground) wire to the rear ground stud.



**Fig. 12:**

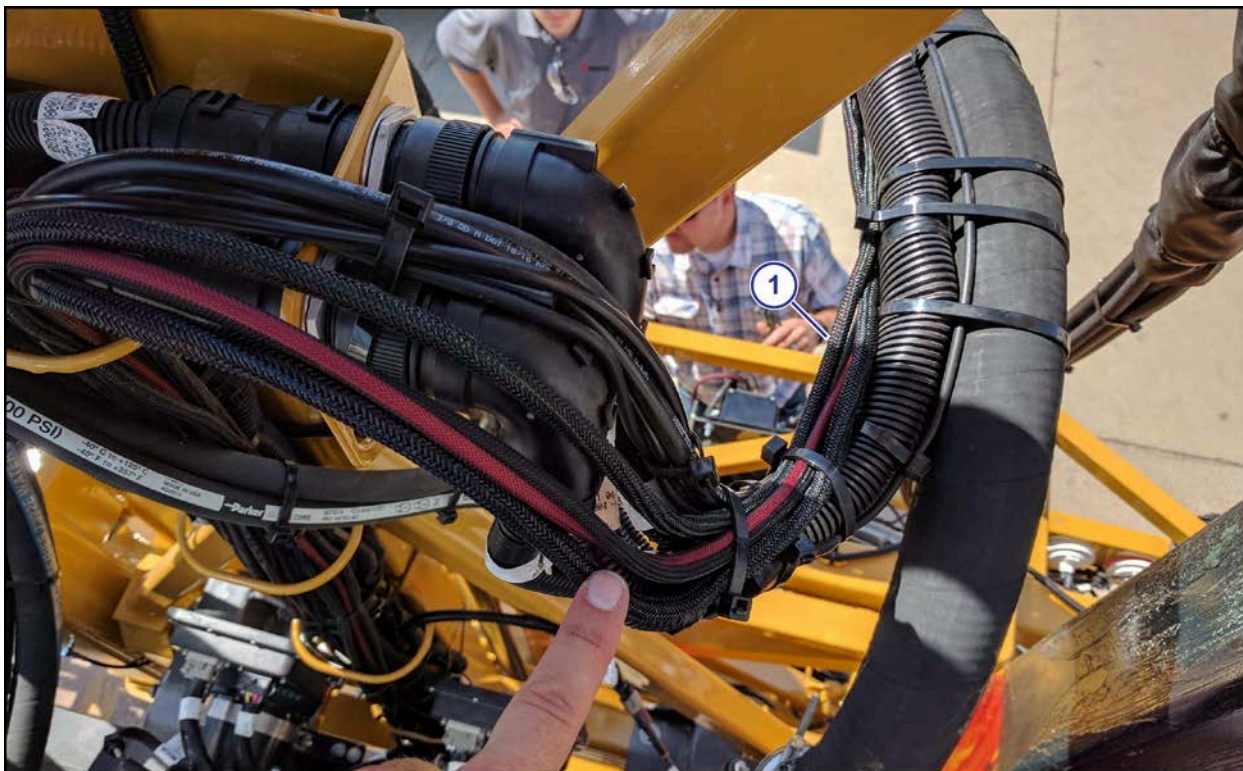
6. Route the power harness (1) with the other loomed harness under the frame and out through the rear chassis cutout, as shown.



**Fig. 13:**

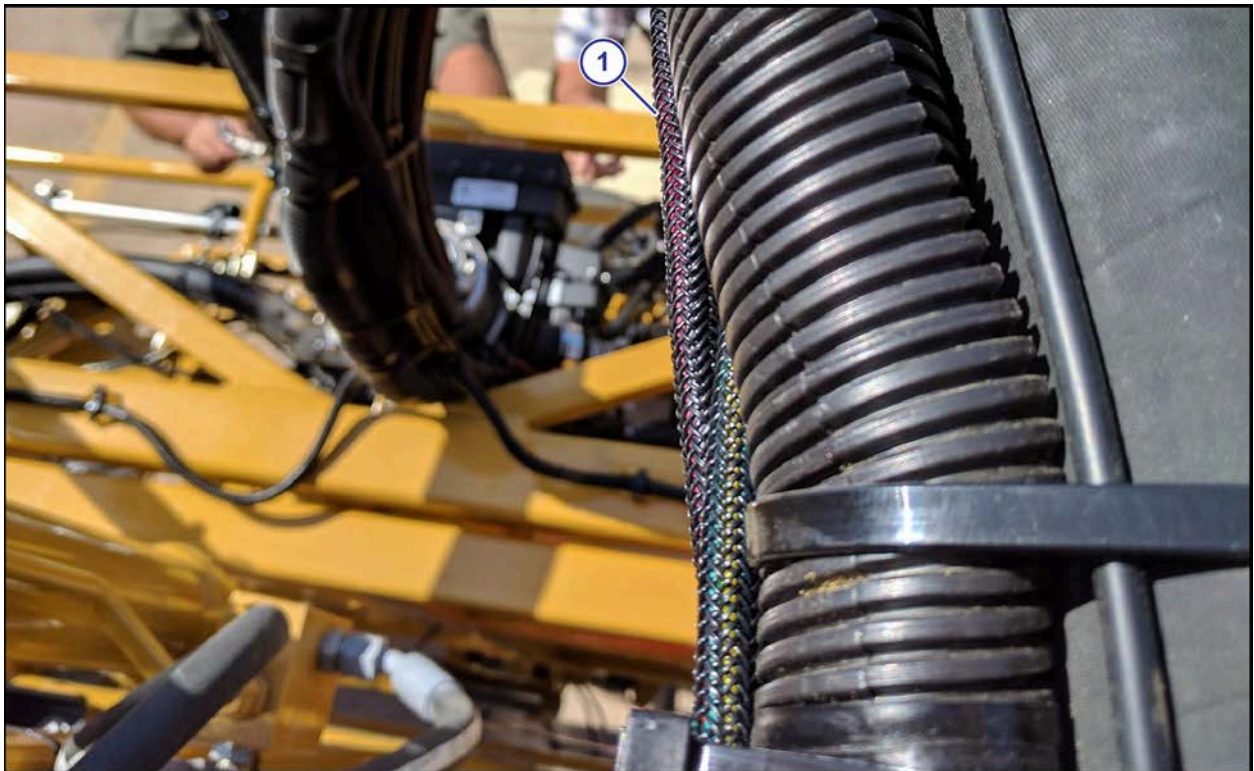
7. Route the power harness up through the metal rings (1) along with the other wiring harnesses, as shown.





**Fig. 14:**

8. Continue to route the power harness (1) along the other harnesses up through the tree/center.
9. Then route the power harness with the hose plumbing to the rear of the tree/center, as shown.



**Fig. 15:**

**10.** Continue to follow the hose plumbing (1) down to the center of the tree/center section.

**11.** Attach the cable ring terminals to the correct lugs on the Gateway hub.

- Red wire to the positive lug.
- Black wire to the negative lug.

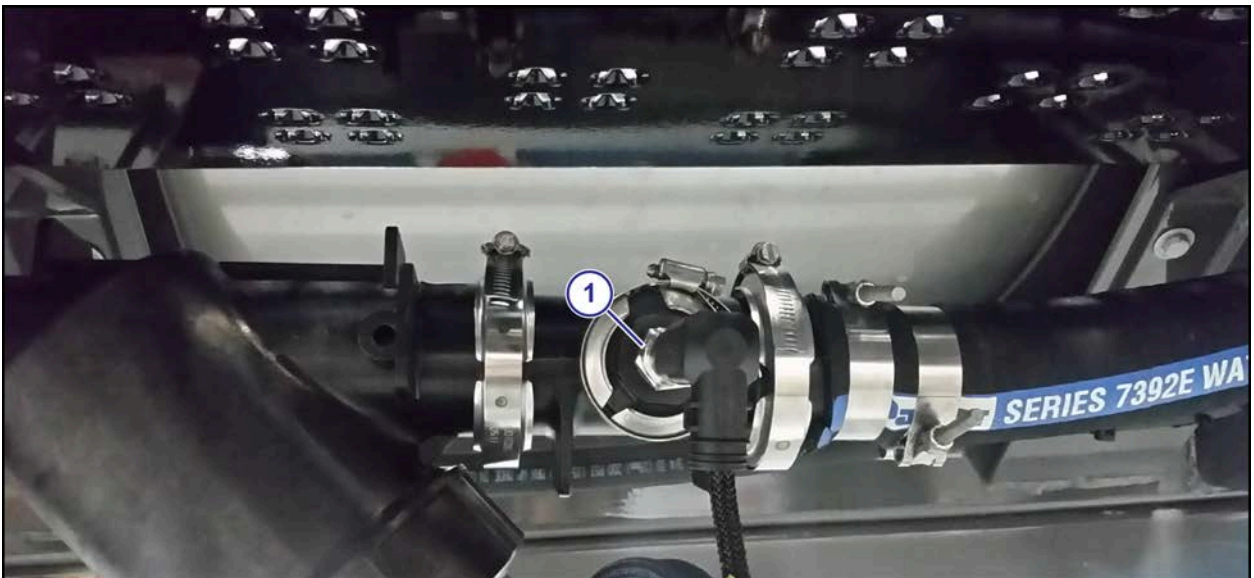
**12.** Tighten the nuts on the bolts.





**Fig. 16:**

**13.** Install the pressure sensor immediately after the two strainers in the main plumbing line (1) coming from the product pump and before the check valve that is in place if chemical injection is installed on the machine.



**Fig. 17:**

The pressure sensor has a 4-pin connector and 90 degree strain-relieving boot that terminates with a 3-pin weather-pack connector. The CapstanAG sensor can be oriented horizontally or slightly horizontal with the strain-relieving boot facing downward.

- 14.** Install the pressure sensor (1) in the 1 in flange port of the tee fitting using a 1/4 in NPT plug.
- 15.** If it is necessary, install the check valve and further product plumbing downstream from the pressure sensor.
- 16.** Connect the pressure sensor to the pressure sensor extension harness.
- 17.** Route the extension harness along the plumbing up and through the center section and down to the Gateway hub.
- 18.** Connect the extension harness to the pressure sensor adapter harness.
- 19.** Use cable ties to secure the harness to the product plumbing every 18 in to 24 in.





## Chapter 6: Cab Kit

### Parts List—930071D1/AG29194

CapstanAG Part Number	AGCO Part Number	Description	Qty
122200-210		PinPoint™ II for Sprayers Operator and Maintenance Manual	1
118669-051	AG429356	PinPoint™ II Cab Harness for AGCO	1
118603-112		1-1/2 in RAM Ball Mount	1
120053-001	AG429359	GPS Adapter for AGCO RoGator C Series	1
122200-218		PinPoint™ Parts Cross Reference Information	1

### Install the Cab Kit



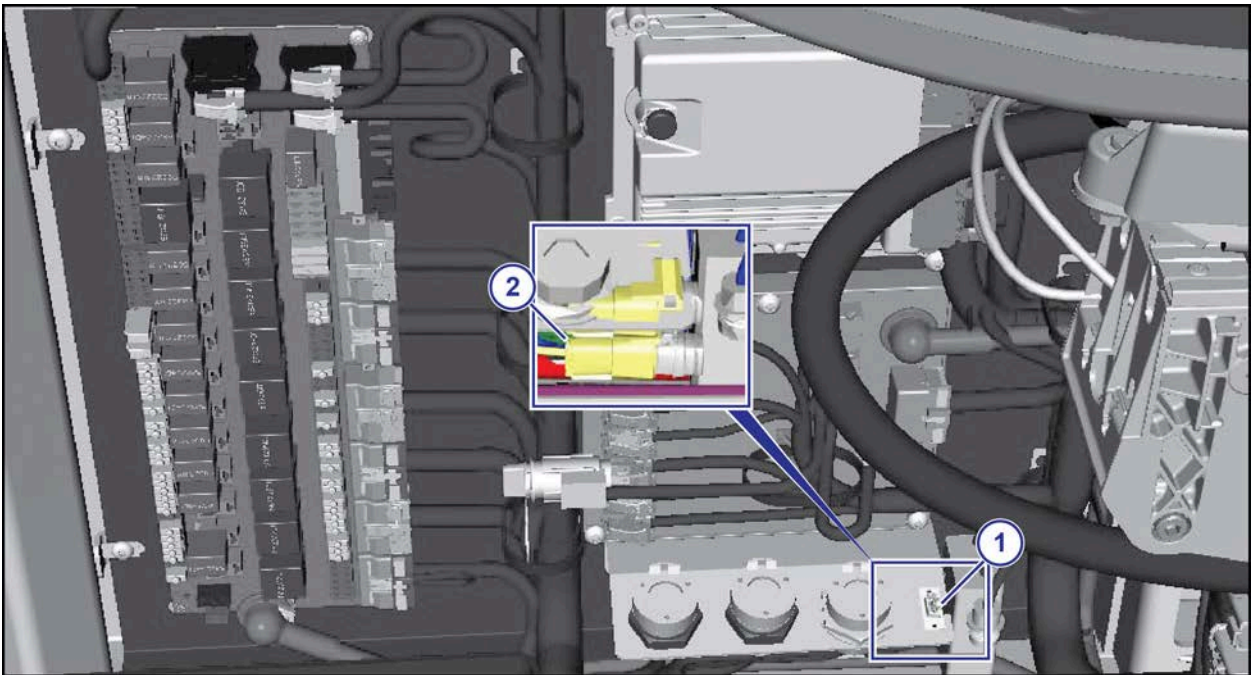
**Fig. 18:**

1. Install the CapView II display (1), from the boom kit, in the cab using the RAM ball mount.
2. Connect the cab harness to the CapView II display for power and GPS.
3. Route the cab harness along the right side of the cab above the window.
4. Put the PinPoint™ II for Sprayers Operator Manual in the yellow document bag.



**Fig. 19:**

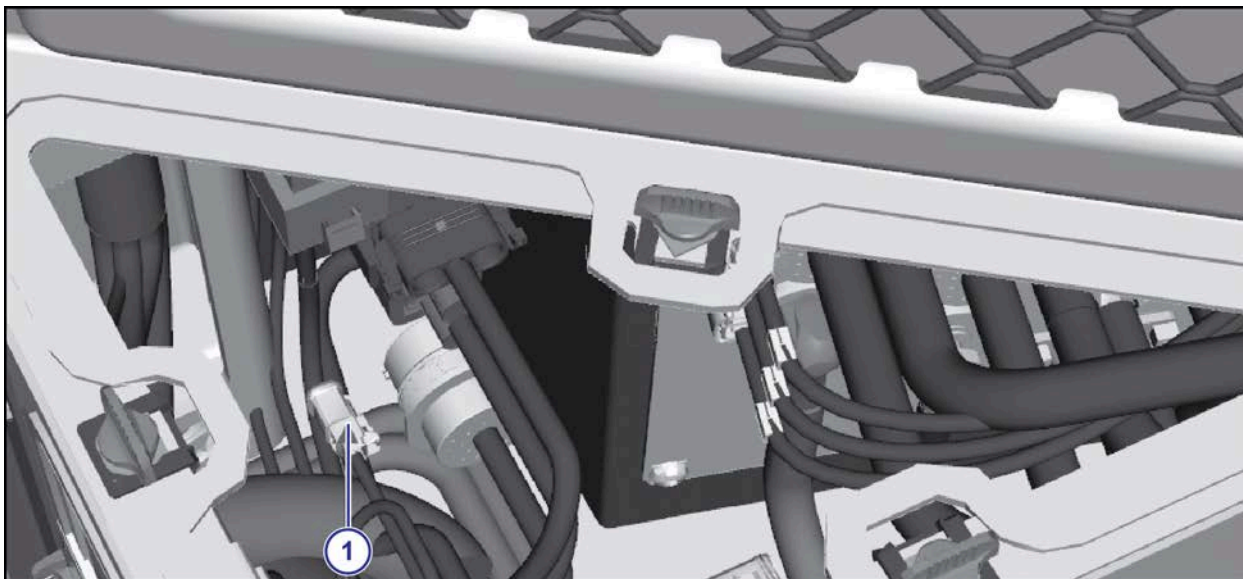
5. Then route the cab harness under the B-post (1) plastic cover, but outside of the metal structure.
6. Continue to route the harness behind the cup holder/auxiliary power plastic tray (2).



**Fig. 20:**

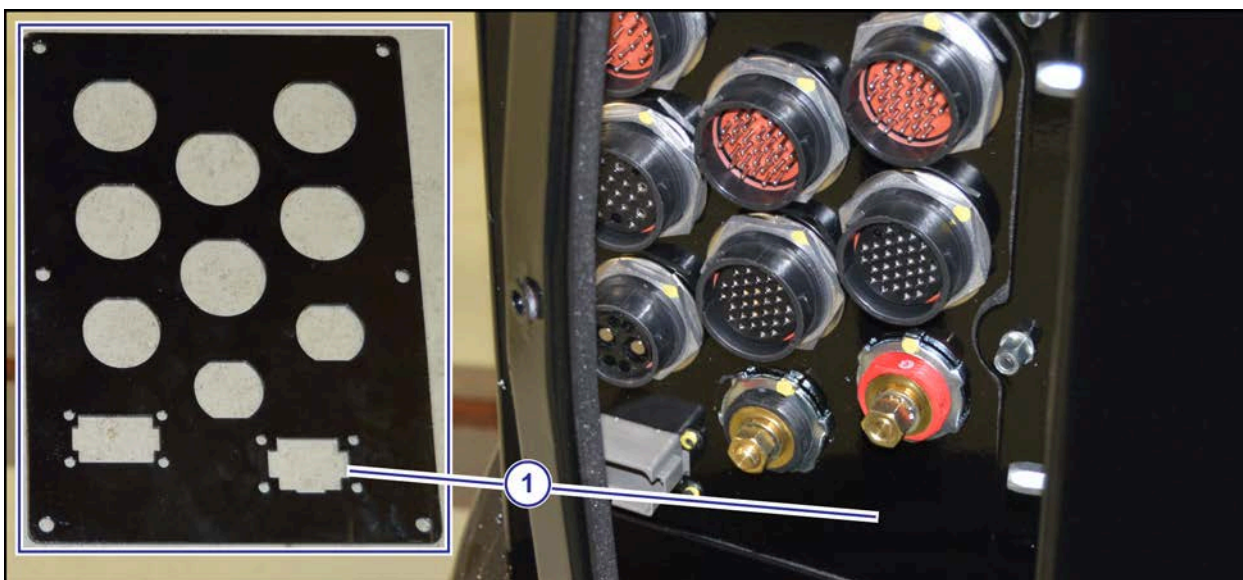
7. Connect the RS232 GPS connector to the accessory port (1) Ref Des-C34.  
If not available, use the GPS adapter cable (2) (P/N 120053-001/AG429359) to connect to AGCO PN-X5085.





**Fig. 21:**

8. Route the rest of the cab harness toward the back panel of the cab where the electrical bulkhead is located.
9. Connect the 2-pin Deutsch DT connector (1) on the cab harness to the X66-Remote Engage SW connector.



**Fig. 22:**

10. Make a hole for the 8-pin Deutsch DT bulkhead connector (1) as shown.
11. Install the bulkhead connector.
12. If the GPS adapter harness is not used, put it in the document bag.





A decorative graphic on the left side of the page, consisting of a thick green curved line and several blue circles of different sizes, some of which are partially cut off by the edge of the page.

Application Systems for Professionals™

[prodsupport@capstanag.com](mailto:prodsupport@capstanag.com) | 855-628-7722 | [www.capstanag.com](http://www.capstanag.com)

©2019 Capstan Ag Systems, Inc. All Rights Reserved. | All trademarks are owned by Capstan Ag Systems, Inc.  
This product may be covered by one or more U.S. Patents. For more information go to [www.BlendedPulse.com](http://www.BlendedPulse.com)