

PinPoint™ III ENVELOP Installation Instructions

AGCO Rogator B-Series MY2012–2017

Table 1: Parts List

Part Number	Description	Qty
116301-014	PRESSURE TRANSDUCER ASSY	1
118640-038	PPIII, HUB MOUNT 300	2
118640-040	KEY FOB PP WITH KEY CHAIN	1
122100-010	INSTALLATION KIT PINPOINT ZIP	1
123000-013	MOUNTING PLATE PPIII	1
123000-150	ASSY, POWER HUB PPIII	1
123000-210	OP MANUAL PPIII ENVELOP	1
620137-001	BOLT FLANGE 3/ 8"-16 X 1" GR8	4
706530-348	DUST PLUG 6-PIN DEUTSCH OT	11
706530-357	DUST CAP 12-PIN RECEPTACLE OT	1
706530-513	DUST CAP, 12 PIN, DTM	1
708000-051	TAPE TEFLON	1
713501-406	BOLT 5/ 16" X 3/ 4" SS	4
713501-447	NUT, FLANGE, 5/ 16 -18, ZINC	4
713501-905	NUT 3/ 8"-16 HEX W/K-LOCK	4
713600-003	WASHER FLAT 3/ 8	4

Requirements

- MY2012–2017 AGCO Rogator B-Series sprayer.

ENVELOP Hub Installation

1. Open main power breaker before beginning installation.



Figure 1: Hub Bracket Installation

2. Assemble the hub mounting plate (Figure 1, Item 1) and strain brackets (Figure 1, Item 2) to the hub (Figure 1, Item 3) using the provided hardware.

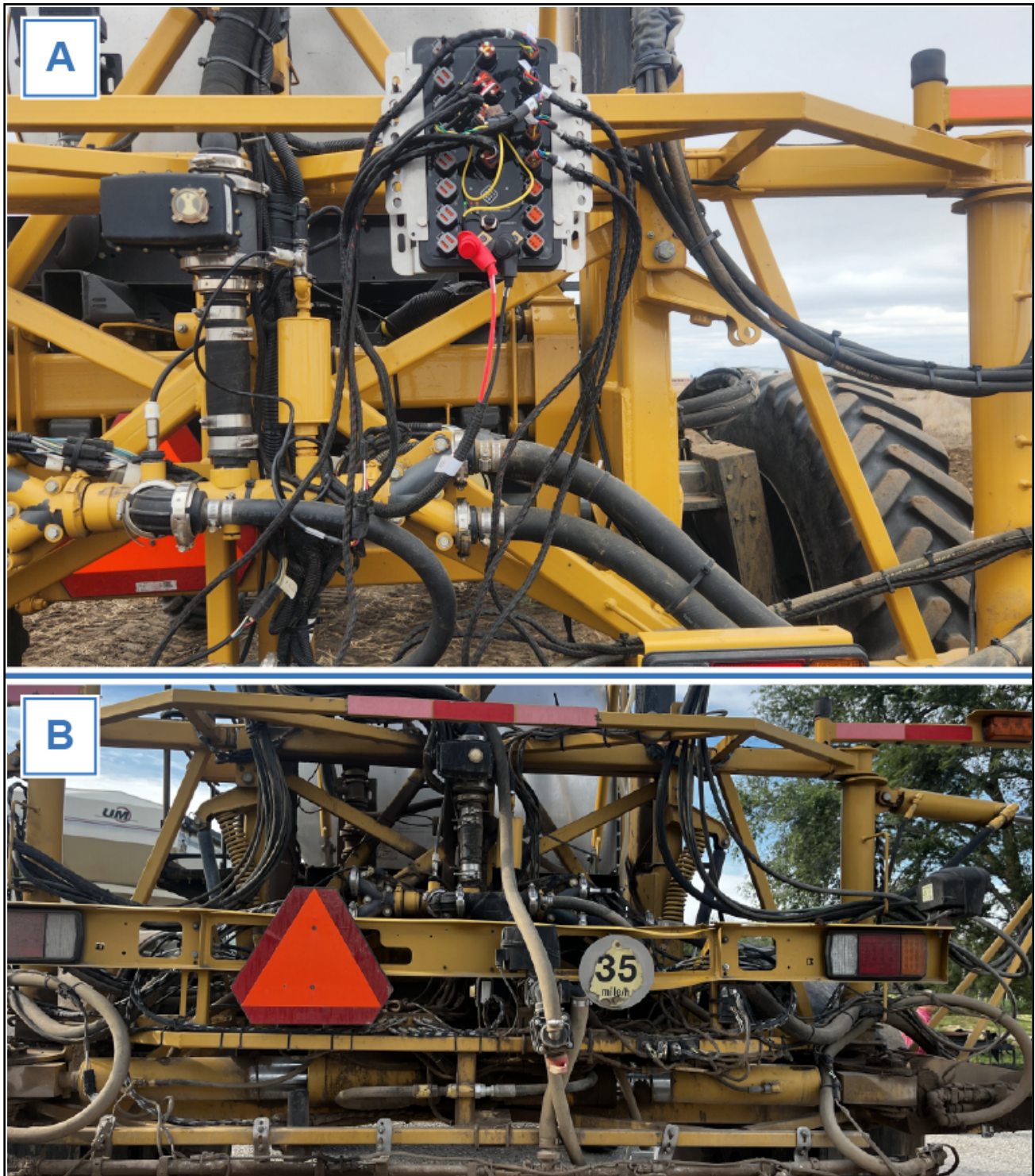


Figure 2: Envelop Hub

3. Mount the Envelop Hub to the rear rack using supplied hardware (Detail A).

Note: B-Series Rogators were available with two different sizes of rear racks. Some older machines with smaller booms used a smaller rear rack (Detail B). For these machines, use of the supplied angle brackets and bolts may be necessary.

Pressure Sensor Installation

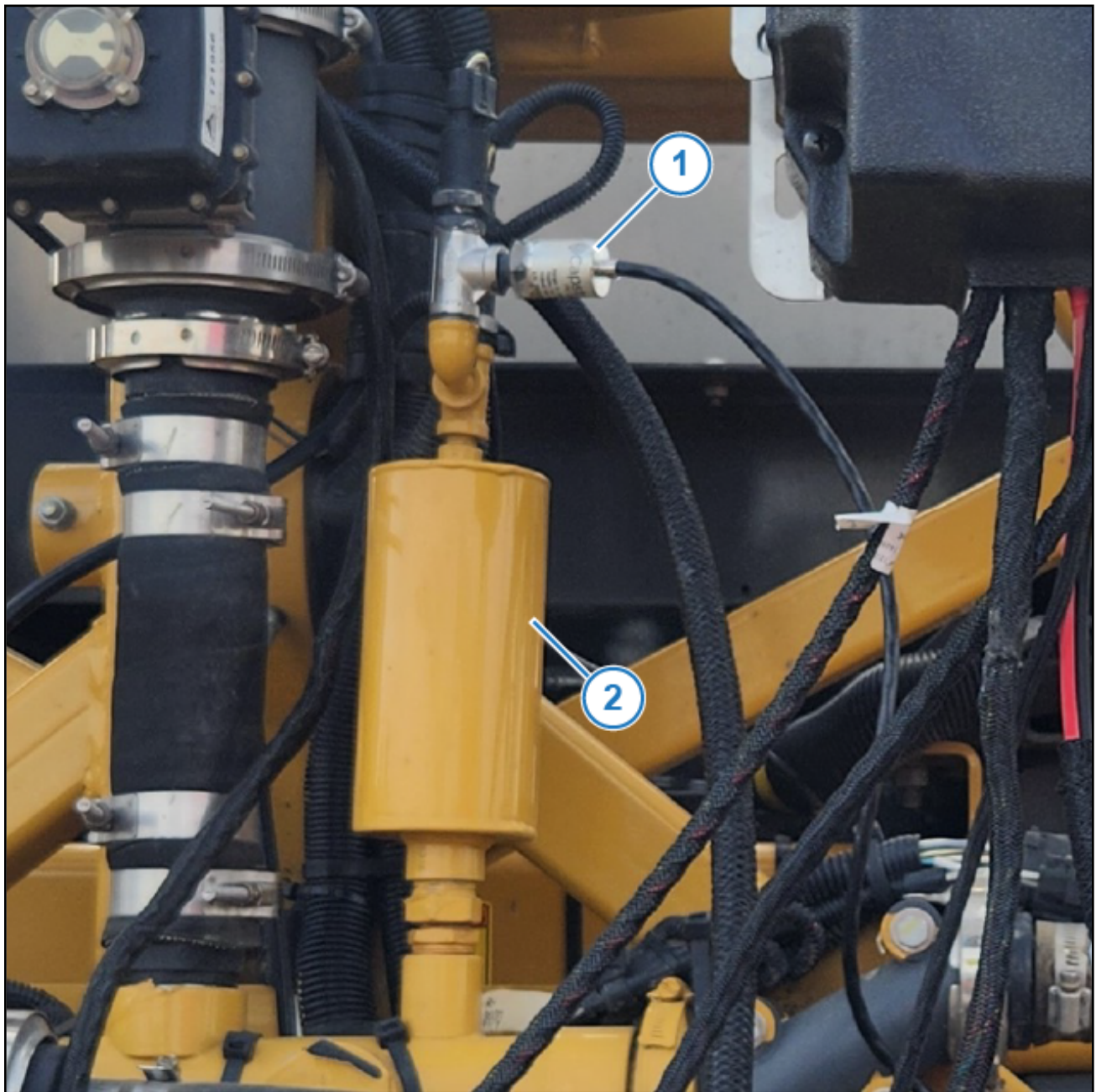


Figure 3: Pressure Sensor

4. Install the supplied pressure sensor (Figure 3, Item 1) and fitting in the accumulator (Figure 3, Item 2).
5. Connect the Chassis Harness pressure sensor lead.
6. Route harness along existing harnesses and hoses going over back rack.

Bulkhead Connector



Figure 4: Bulkhead Connector

7. Disconnect the section bulkhead connector (Figure 4, Item 1), located at the top of the rear rack, below the hydraulic block.

The section bulkhead connector is the upper connector, closest to the product tank, labeled **Boom Shutoff**.

8. Install the bulkhead connector lead from the Chassis Harness (Figure 4, Item 2) inline with existing machine harness.
9. Continue to route chassis harness down the center of the rear rack, following existing machine harnessing.

Note: Do not zip tie harness at this time. The power harness will be routed with these harnesses.

Controller Box Connections

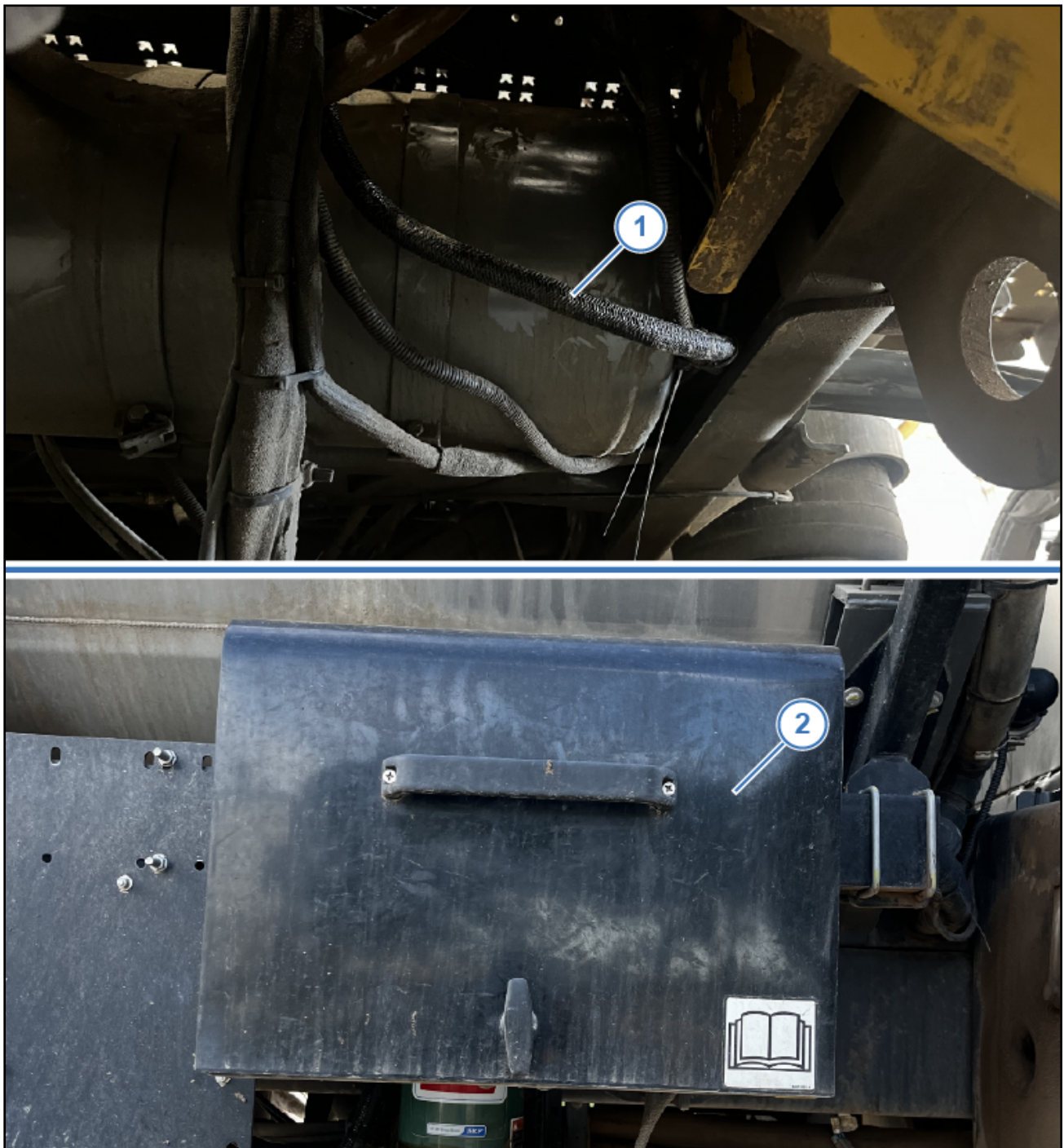


Figure 5: Controller Box

10. Route the Chassis Harness (Figure 5, Item 1) along the inside right frame rail to the controller box on the right side of the machine, behind the toolbox and fuel tank (Figure 5, Item 2).
11. Open the box and locate the hole in the bottom. Install the supplied grommet in the hole and route the Chassis Harness leads with unterminated wires through the hole.

Controller Box Connector Installation

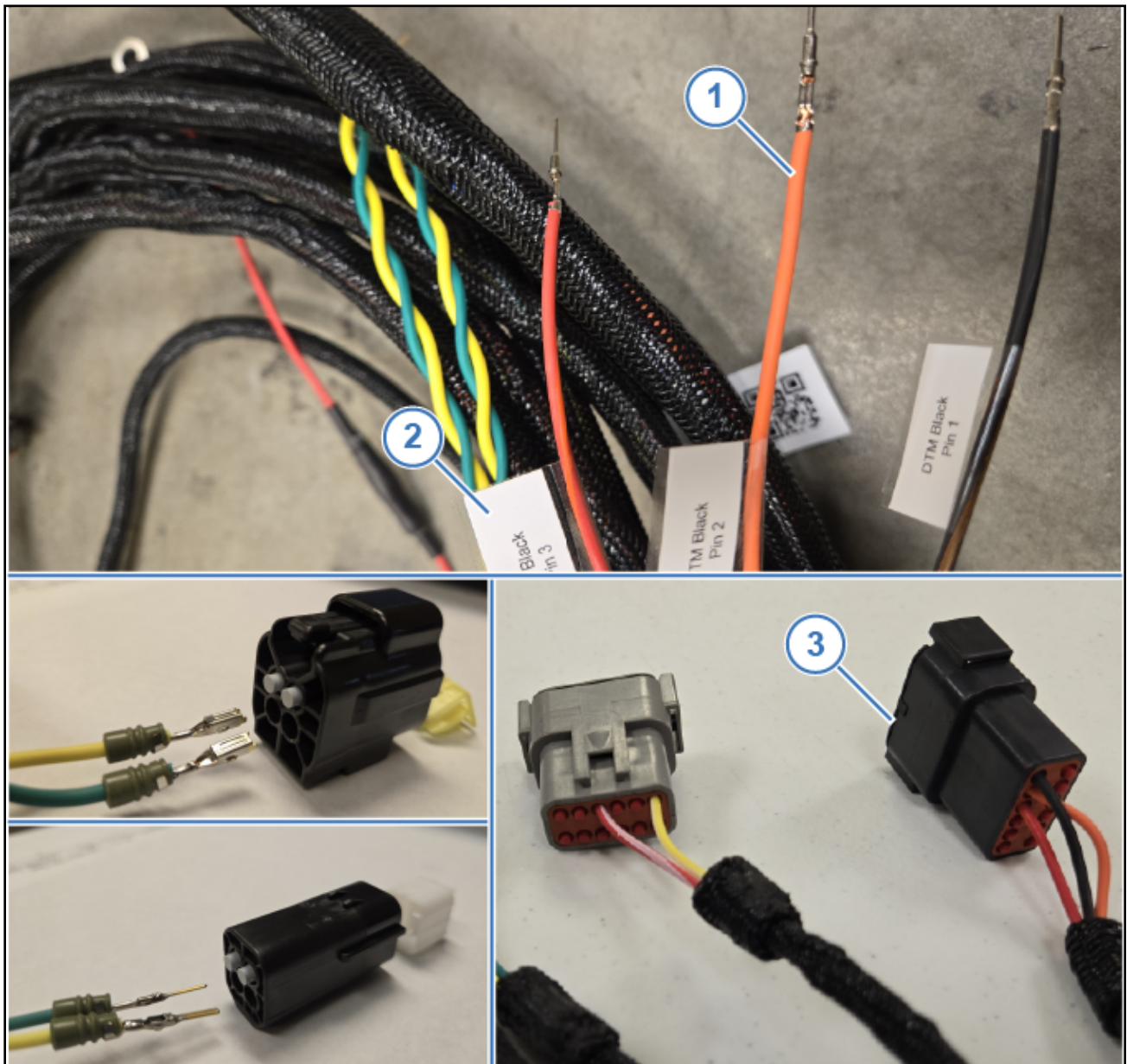


Figure 6: Chassis Harness Connectors

12. Install unterminated wires (Figure 6, Item 1) from the Chassis Harness, labeled (Figure 6, Item 2) on each wire, into their corresponding connectors (Figure 6, Item 3).

Refer to [Table 2](#), [Table 3](#), [Table 4](#), and [Table 5](#).

Note: Connectors are not installed on harness to allow harness to fit through hole in box.

Table 2: Black 12-Pin DTM Connector Pinout

Pin	Description	Wire Color	Pin	Description	Wire Color
1	Flow Ground	Black/Orange	7	Unused	--
2	Flow Signal	Orange	8	Unused	--
3	Flow Power	Red/Orange	9	Unused	--
4	Unused	--	10	Unused	--
5	Unused	--	11	Unused	--
6	Unused	--	12	Unused	--

Table 3: Gray 12-Pin DTM Connector Pinout

Pin	Description	Wire Color	Pin	Description	Wire Color
1	Unused	--	7	Servo Out +	Yellow/White
2	Unused	--	8	Unused	--
3	Unused	--	9	Unused	--
4	Unused	--	10	Key-Switched Power	Red/White
5	Unused	--	11	Unused	--
6	Unused	--	12	Unused	--

Table 4: Black 4-Pin Male Connector Pinout

Pin	Description	Wire Color	Pin	Description	Wire Color
1	Unused	--	3	CAN High	Yellow
2	CAN Low	Green	4	Unused	--

Table 5: Black 4-Pin Female Connector Pinout

Pin	Description	Wire Color	Pin	Description	Wire Color
1	Unused	--	3	CAN High	Yellow
2	CAN Low	Green	4	Unused	--

ISO Bus Bar Chassis Harness Connections

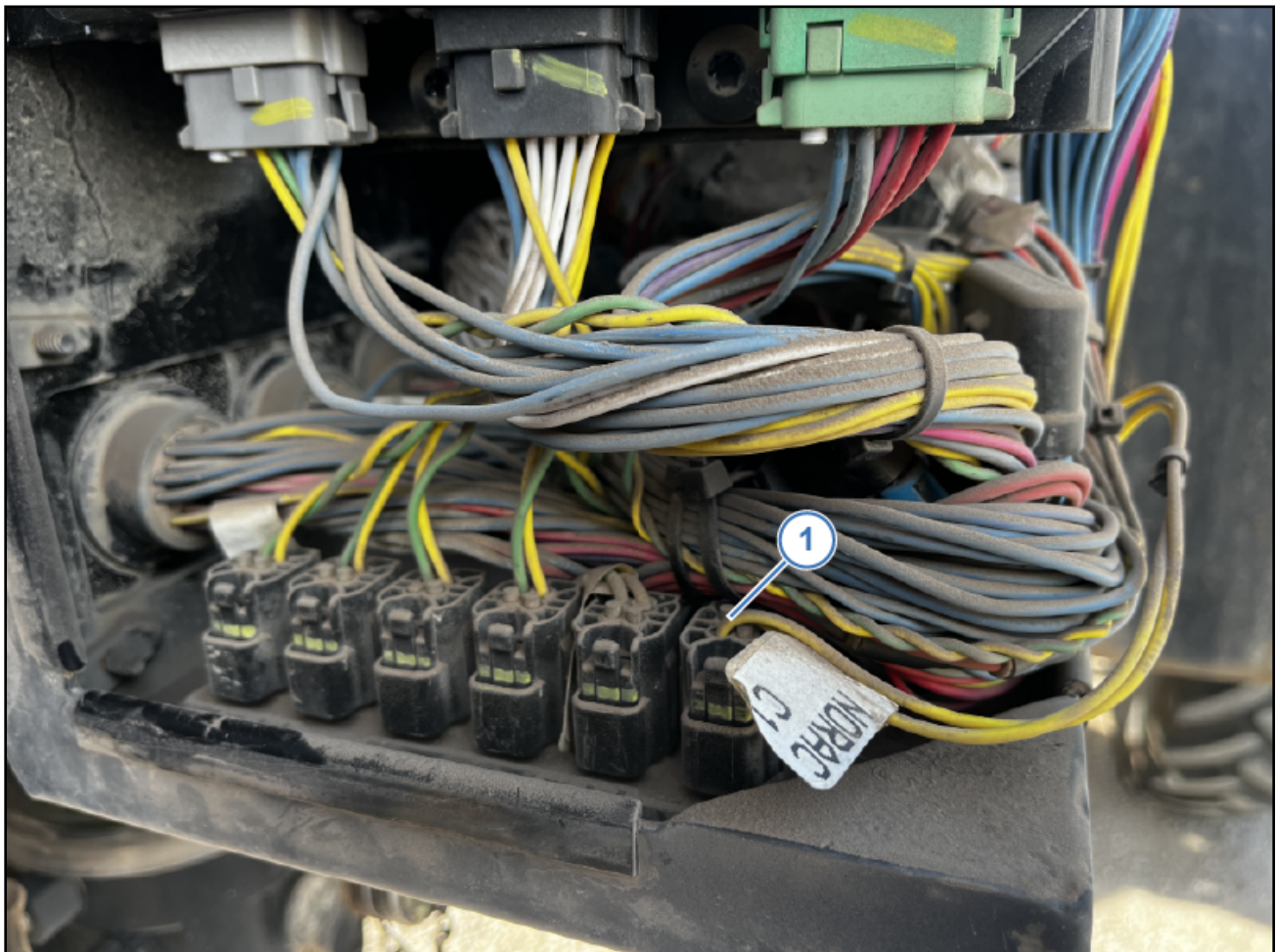


Figure 7: ISO Bus Bar

13. Locate the ISO buss bar at the back of the Controller box. Locate the connector labeled Norac C1 (Figure 7, Item 1).
14. Remove the Norac C1 connector from the bus bar and install the Chassis Harness ISO lead into the bus bar.
15. Install the machine Norac C1 connector into other ISO connector on the Chassis Harness so that the ISO lead from the Chassis Harness sits inline with the machine Norac C1 connection.

Product Node Removal

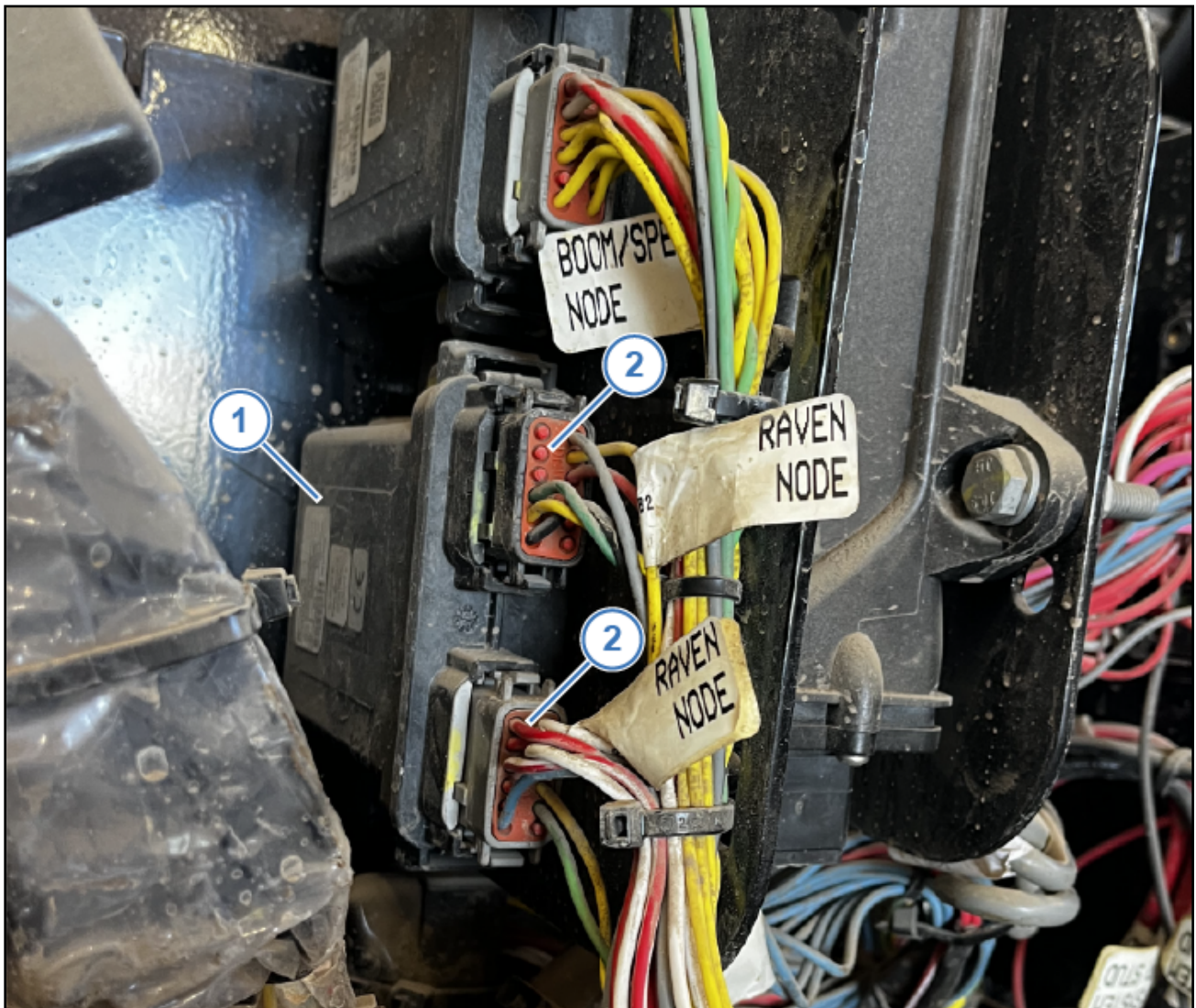


Figure 8: Product Node

16. Locate the product node (Figure 8, Item 1) and disconnect it from the machine harness.
17. Connect the two product node connectors (Figure 8, Item 2) into the Chassis Harness.

Serial GPS Cable Installation

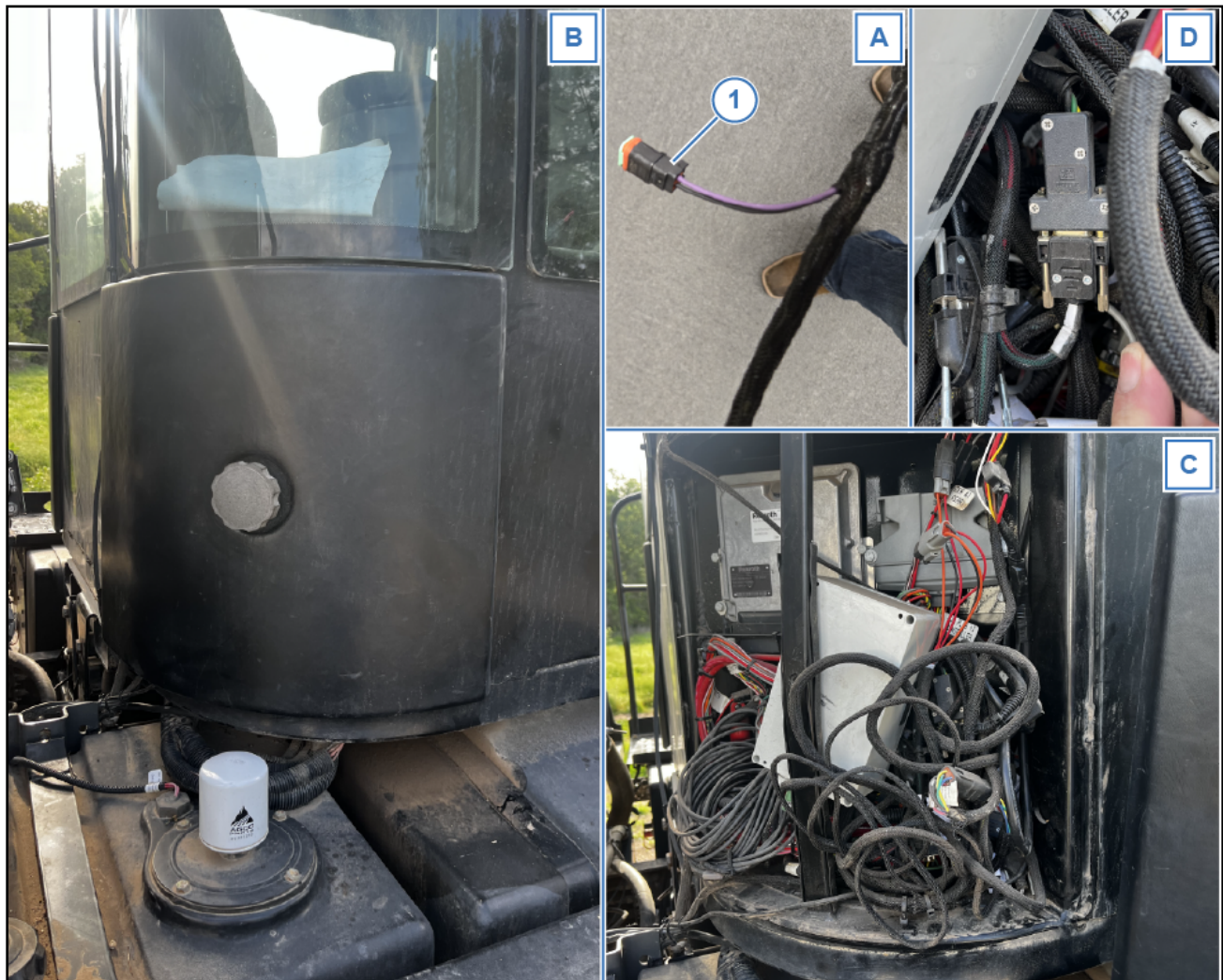


Figure 9: Serial GPS Cable

18. If the machine is equipped with ISO/CAN GPS, Proceed to Step 23.
19. If the machine is equipped with serial GPS, locate the 2-pin connector on the Chassis Harness (Detail A), next to the connectors inserted into the Controller box (Figure 9, Item 1).
20. Remove the dust cap and install the Serial GPS Harness (P/N 123100-112).
21. Route the Serial GPS Harness along the frame rail and into the back right corner of the cab (Detail B).
22. Remove the cover (Detail C). Locate the GPS Out serial connector (Detail D) and connect it to the Serial GPS Harness (Figure 9, Item 2).

Cab ISO Harness Installation



Figure 10: Cab ISO Harness

If no other ISO components are present, a Cab ISO Harness may be necessary.

23. Locate the upper access panel on the right side of the cab (Figure 10, Item 1). Remove the cover and locate the ISO connector (Detail A).
24. Remove the existing terminator from the ISO connector (Figure 10, Item 2) and plug the Cab ISO harness into it.
25. Route the Cab ISO harness behind the interior panels and up the corner post to the back of the Raven Viper TC. Connect it to Port 5 on the TC.

Power Harness Installation



Figure 11: Power Harness and Circuit Breaker

28. Connect the power harness to the power lugs on the hub.
29. Route the Power Harness, following the previously routed Chassis Harness to the back of the cab.
30. Continue routing the Power Harness across the lower frame rail crossmember to the batteries.
31. Connect the red power (+) and black ground (-) cables to the batteries, installing the provided 80 amp circuit breaker inline with the red power (+) cable.
Note: Take care not to mount circuit breaker in a position where it may accidentally be tripped.
32. Secure all harnessing as necessary with cable ties.
33. After installation is complete, set up the system in accordance with integration instructions (PN 123000-244) AGCO B-Series PPIII Integration.