

PPIII Envelop Installation Instructions

Model Year 2023 New Holland

Table 1: Parts List

Part Number	Description	Qty
713600-002	WASHER FLAT 5/16" SS	2
713600-001	WASHER LOCK 5/16" SS	2
713501-447	NUT, FLANGE, 5/16 -18, ZINC	2
713501-412	BOLT 5/16-18 X 1 SS HEX HEAD	2
713501-406	BOLT 5/16" X 3/4" SS	2
123100-088	ASSEMBLY RCM ADAPTER PPIII	1
123100-087	HARNESS, RCM ADAPTER TO PPIII	1
123100-040	POWER HARNESS 40' PPIII	1
123000-230	INTEGRATION, MILLER, PPIII	1
123000-210	OP MANUAL PPIII ENVELOP	1
123000-150	ASSY, POWER HUB PPIII	1
123000-023	MOUNTING PLATE PPIII HUB	1
118640-040	KEY FOB PP WITH KEY CHAIN	1

Requirements

- Model Year 2023 New Holland Sprayer

Remove RCM

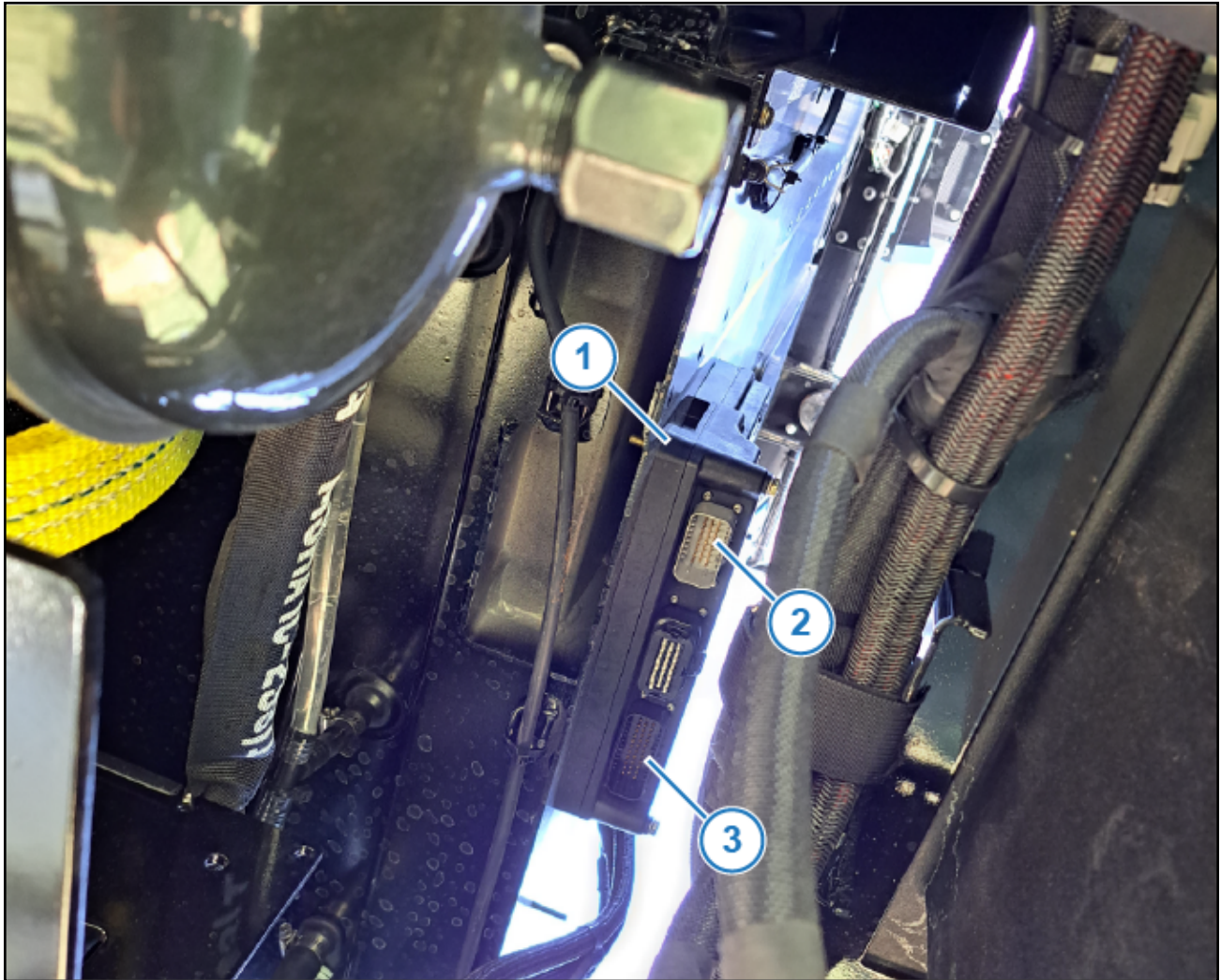


Figure 1: RCM Location

The RCM (Figure 1, Item 1) is located between the cab and product tank.

1. Open main power circuit breaker before beginning installation.
2. Unplug the J1 (Figure 1, Item 2) and J3 (Figure 1, Item 3) connectors from the RCM.
3. Remove the RCM from the machine if desired.

Install RCM Adapter

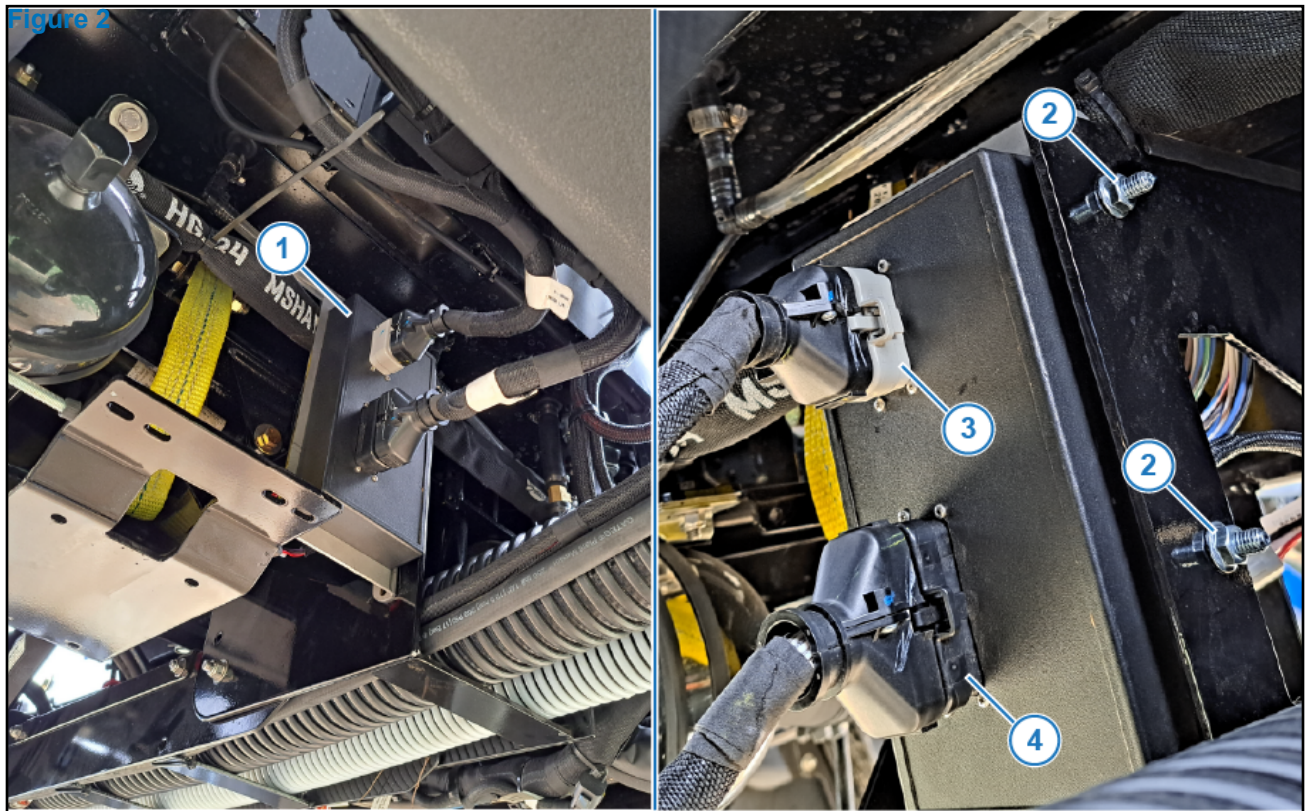


Figure 2: RCM Adapter Location

4. Install the RCM Adapter (P/N:) (Figure 2, Item 1) using the existing holes in the machine frame and the included hardware (Figure 2, Item 2).
5. Plug the J1 (Figure 2, Item 3) and J3 (Figure 2, Item 4) into the RCM Adapter as shown.

Envelop Hub Installation

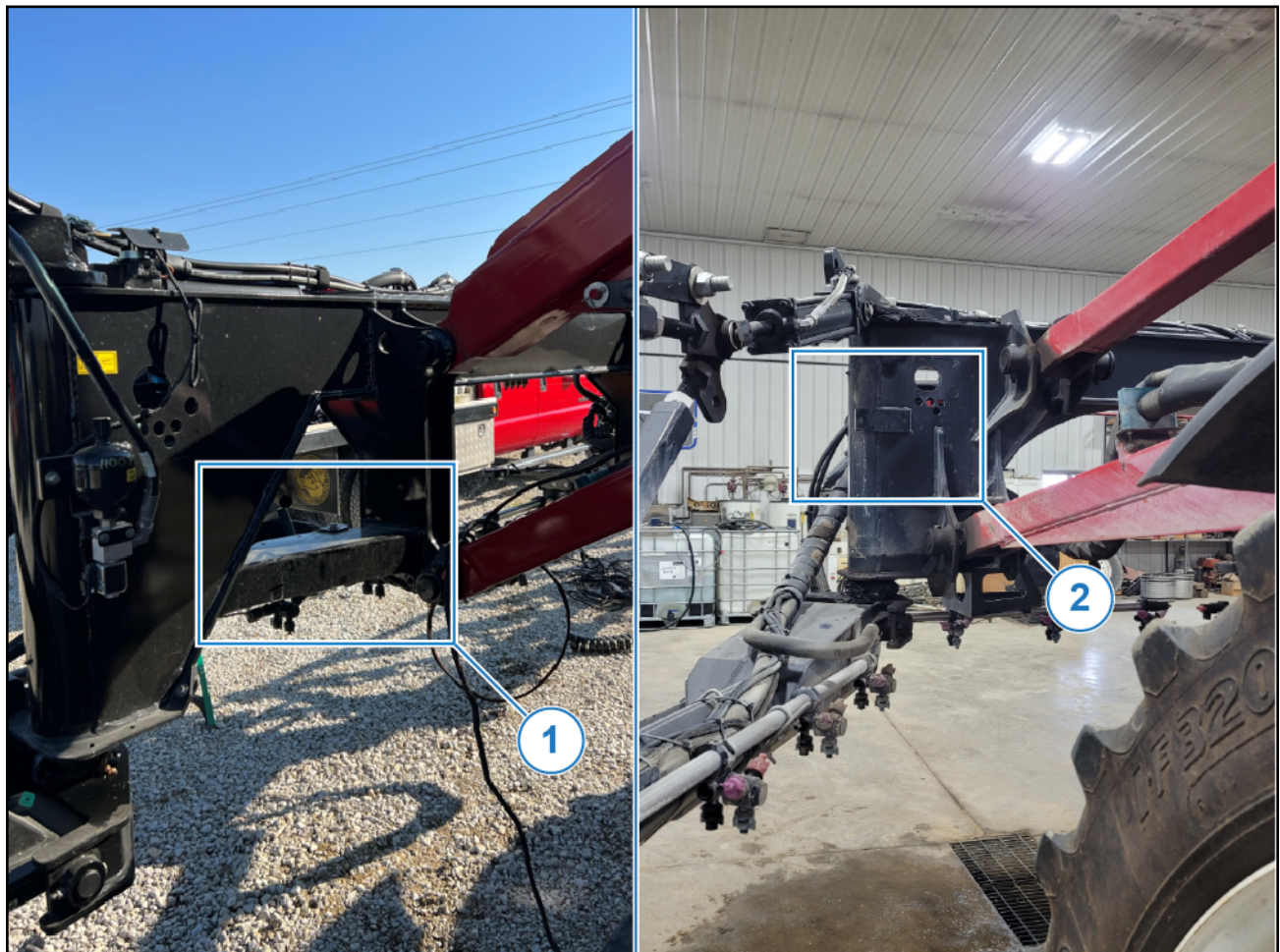


Figure 3: Envelop Hub Mounting Location

6. Locate appropriate Envelop Hub mounting location for your machine. New Holland machines use one of two boom bracket configurations. The Envelop Hub can be mounted face-up, horizontally (Figure 3, Item 1) or vertically, facing rear of machine (Figure 3, Item 2).

Note: View looking forward from the front of the cab, behind left-hand side of front-mount boom.

7. If machine uses horizontal mounting position, proceed to Step 8. If machine uses vertical mounting position, proceed to Step 11.

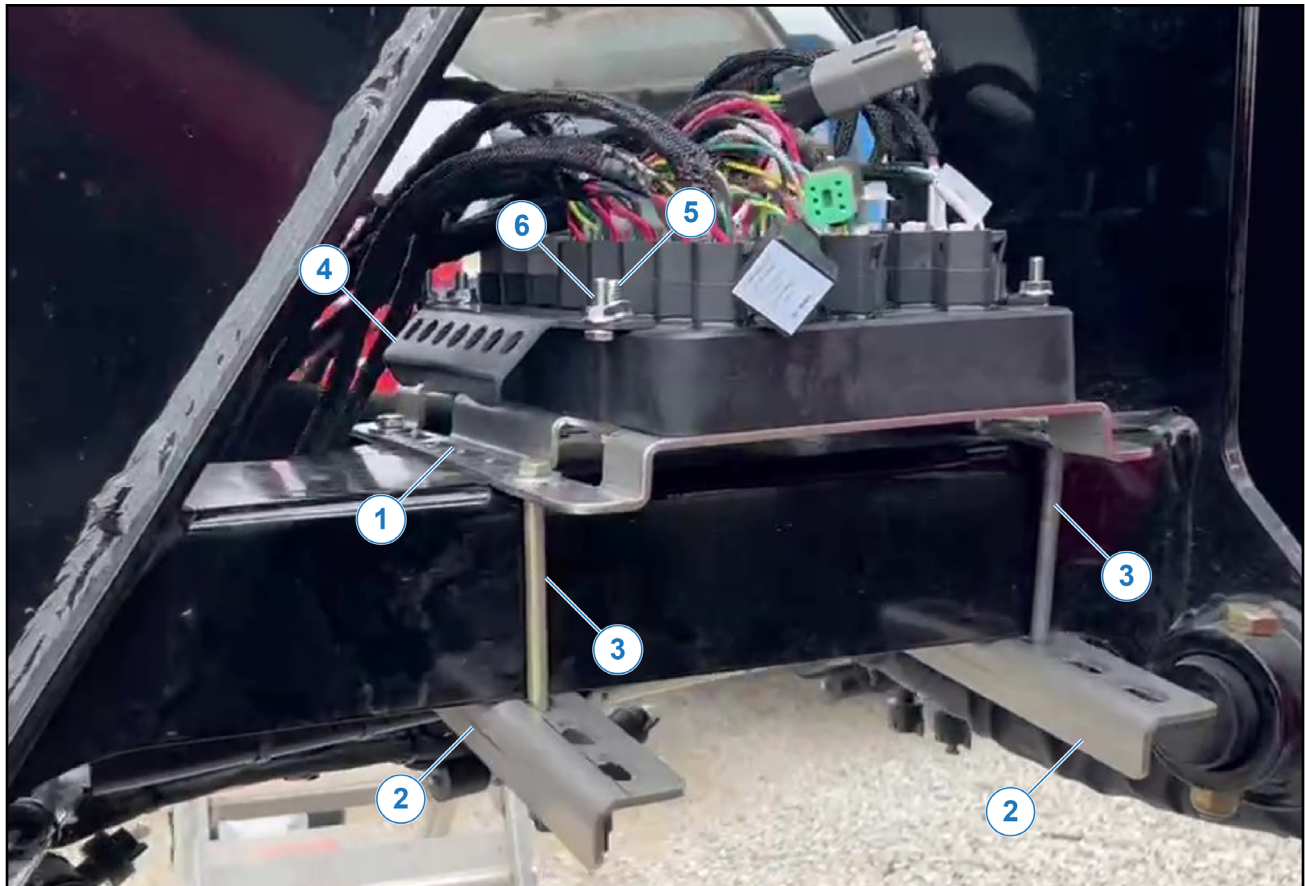


Figure 4: Horizontal Mounting Bracket Installation

8. Secure universal mounting bracket (123000-013) (Figure 4, Item 1) to boom frame using two mounting brackets (118640-108) (Figure 4, Item 2), 6" carriage bolts (713501-433) (Figure 4, Item 3), flat washers (713900-002) and flange nuts (713501-447).
9. Insert 5/16" x 2 1/4" bolts (Figure 4, Item 5) included with Envelope Hub through strain relief bracket holes (Figure 4, Item 4), through Envelop Hub mounting holes, and attach to universal bracket installed in previous step with included flange nuts.
10. Insert 1/4" bolts from backside of strain relief brackets and attach with flange nuts (Figure 4, Item 6). Proceed to Step 13.

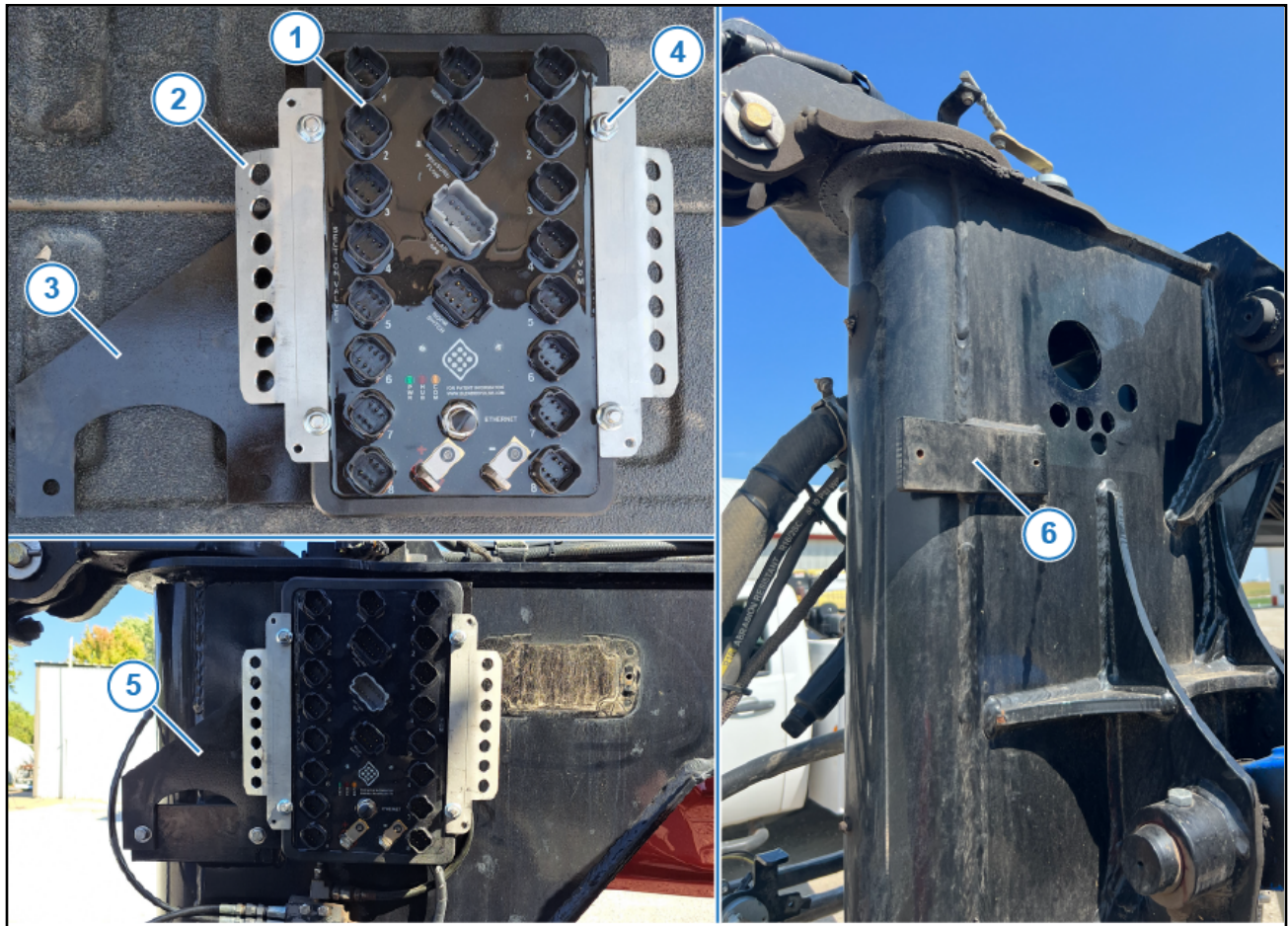


Figure 5: Vertical Mounting Bracket Installation

11. Install the Envelop Hub (Figure 5, Item 1) and strain relief brackets (Figure 5, Item 2) onto the mounting bracket (Figure 5, Item 3) using the included 5/16" x 2 1/4" bolts and 5/16" nuts (Figure 5, Item 4).
Note: The bolts should be inserted from the back of the assembly with the nuts installed from the front.
12. Secure mounting bracket and Envelop hub assembly (Figure 5, Item 5) to existing holes in boom bracket (6) using 3/4" cap screws (713501-406). Proceed to Step 13.



Figure 6: Install Harnesses

13. Plug each Boom Shutoff Harness and VCM Extension Harness connector into their appropriately labeled ports on the Envelop Hub.
14. Plug the Chassis Harness into the Envelop Hub's Servo, Pressure/Flow, and ISOCAN/GPS ports.
15. Connect the power harness positive and negative terminals to the correct lugs on the Envelop Hub.
16. Insert dust plugs into unused ports.
17. Zip tie harnesses to strain relief brackets so that there is a small amount of slack in hub side wiring.



Figure 7: Chassis Harness Routing

18. Route the Chassis Harness and Power Harness (Figure 7, Item 1) along the product tube, up the boom support, and under the chassis toward the back of the machine cab as shown.

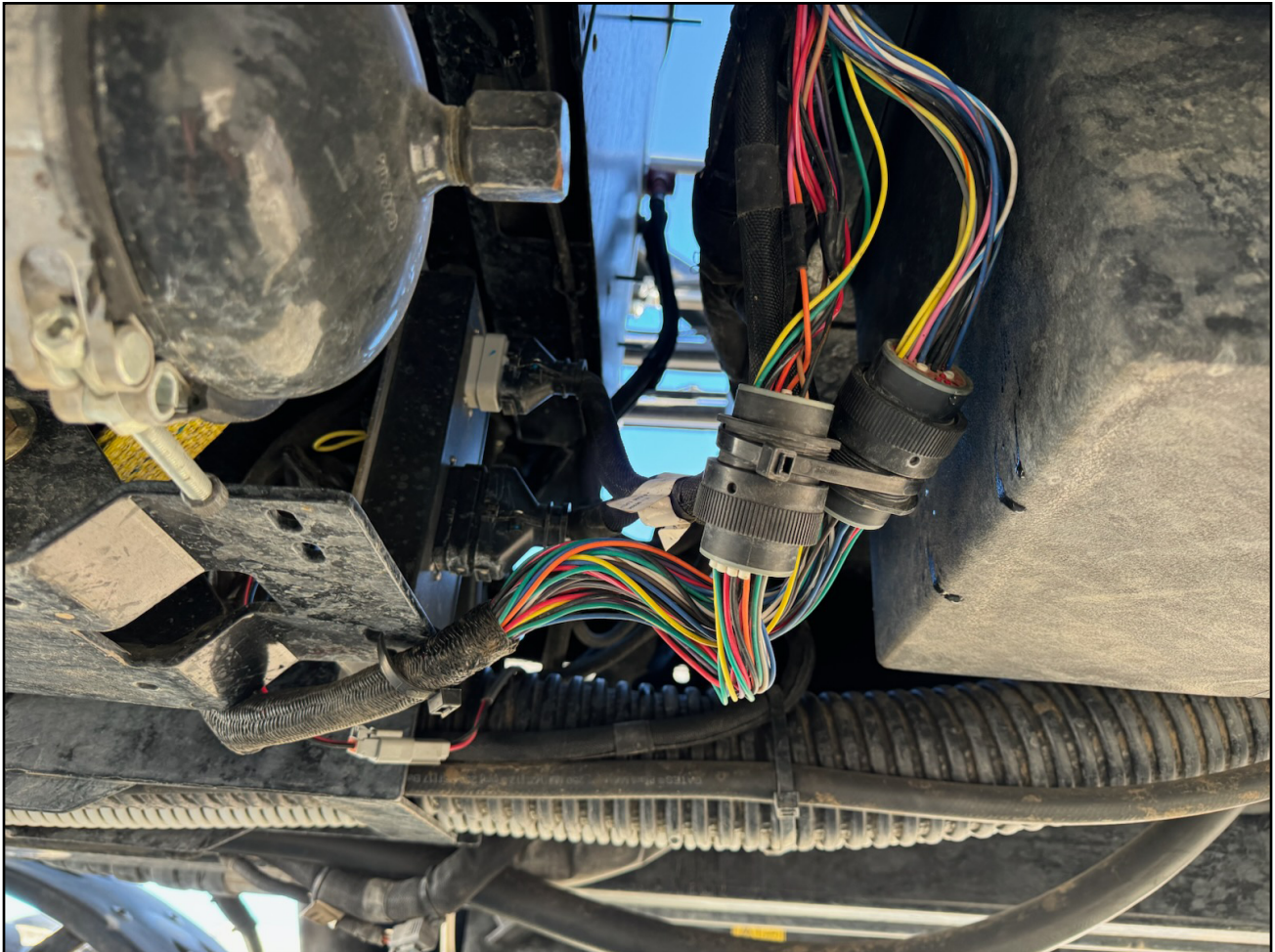


Figure 8: Chassis Harness Connections

19. Connect the two 35-pin connectors from the chassis harness to the matching connectors from the machine harness near the rear of the machine cab. These connectors are paired male and female so they cannot be switched.



Figure 9: Power Harness Positive Connection

20. Route the positive power harness cable (Figure 9, Item 1) to the power junction box (Figure 9, Item 2) located at the rear, underside of the machine.
21. Install the circuit breaker (Figure 9, Item 3) and connect the power harness lead (Figure 9, Item 4) into the junction box as shown using the supplied hardware.

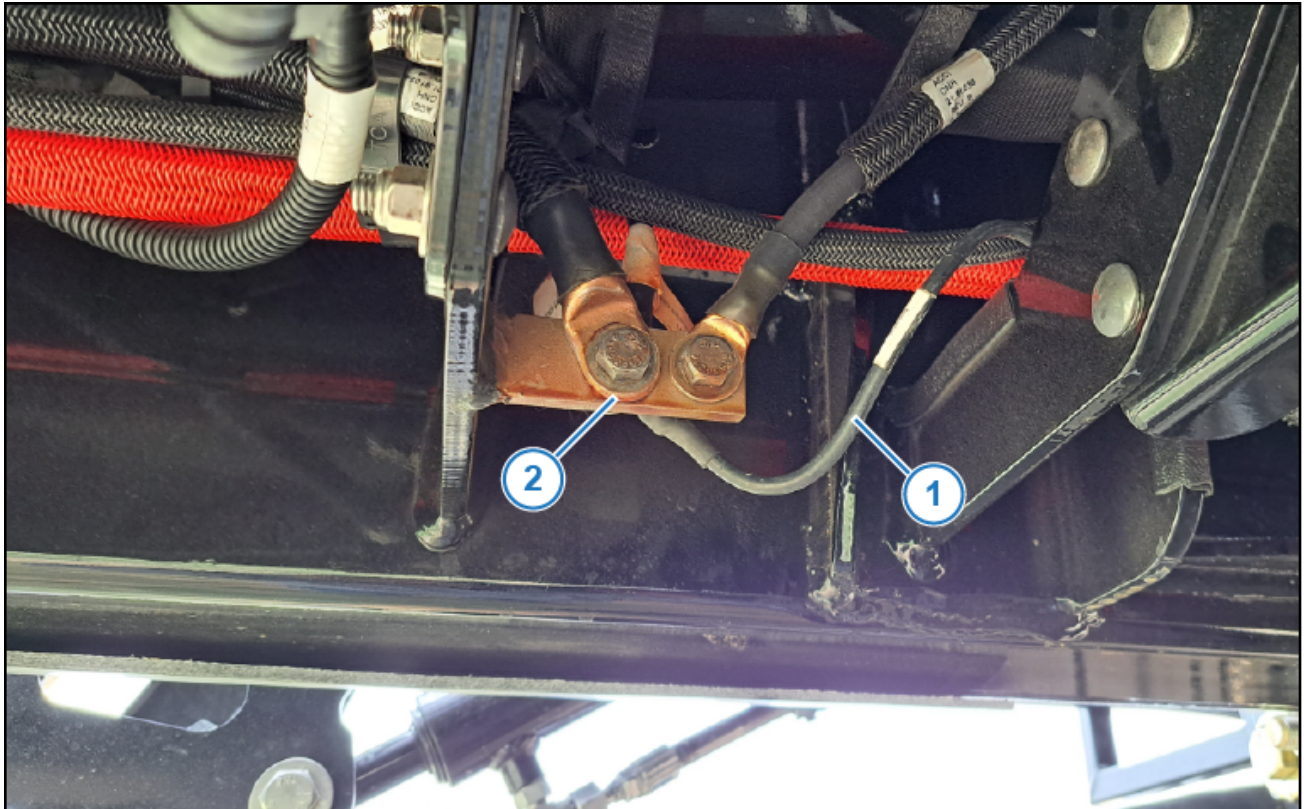


Figure 10: Figure

22. Route the negative power harness cable (Figure 10, Item 1) to the grounding lug (Figure 10, Item 1) located on the underside frame rail. Connect it using the supplied hardware.
23. Secure all harnesses with zipties so that they do not rub or interfere with any moving components.
24. Close the main power circuit breaker.
25. Install the Envelop hub cover.