

Installation Instructions

PinPoint™ III ENVELOP on Oxbo

Parts List

Part Number	Description	Parts Drawing Description	Qty
122100-010	PPIII installation kit	INSTALLATION KIT PINPOINT	1
123000-013	Mounting Plate	MOUNTING PLATE, PPIII	1
123000-210	Operator's Manual	OP MANUAL PPIII ENVELOP	1
123000-232	Installation Instructions	INSTALLATION, OXBO, PPIII	1
123000-233	Integration Instructions	INTEGRATION, OXBO, PPIII	1
123100-040	Power Harness	POWER HARNESS 40' PPIII	1
123100-045	Chassis Harness	HARNESS, OXBO CHASSIS	1
710100-538	U-Bolt	SQ U-BOLT 3/8"-16 X 4" X 5"	2

Envelop Hub Installation

1. Open the main power breaker before beginning installation.



Figure 1 — Envelop Hub Mounting Location

2. *Figure 1:* Locate the right-side angle support bracket on the transom. Install the gateway hub mount (1) to the support bracket.
3. Use the provided U-bolts to secure the hub mount to the transom bracket.
4. Mount the Gateway hub (2) to the support bracket using the hardware provided.



Figure 2 — Harness Routing

5. *Figure 2:* Route the chassis harness from the Gateway hub up the support on the transom along with the other harnesses (1) under the upper lift arm across the frame and under the cab.

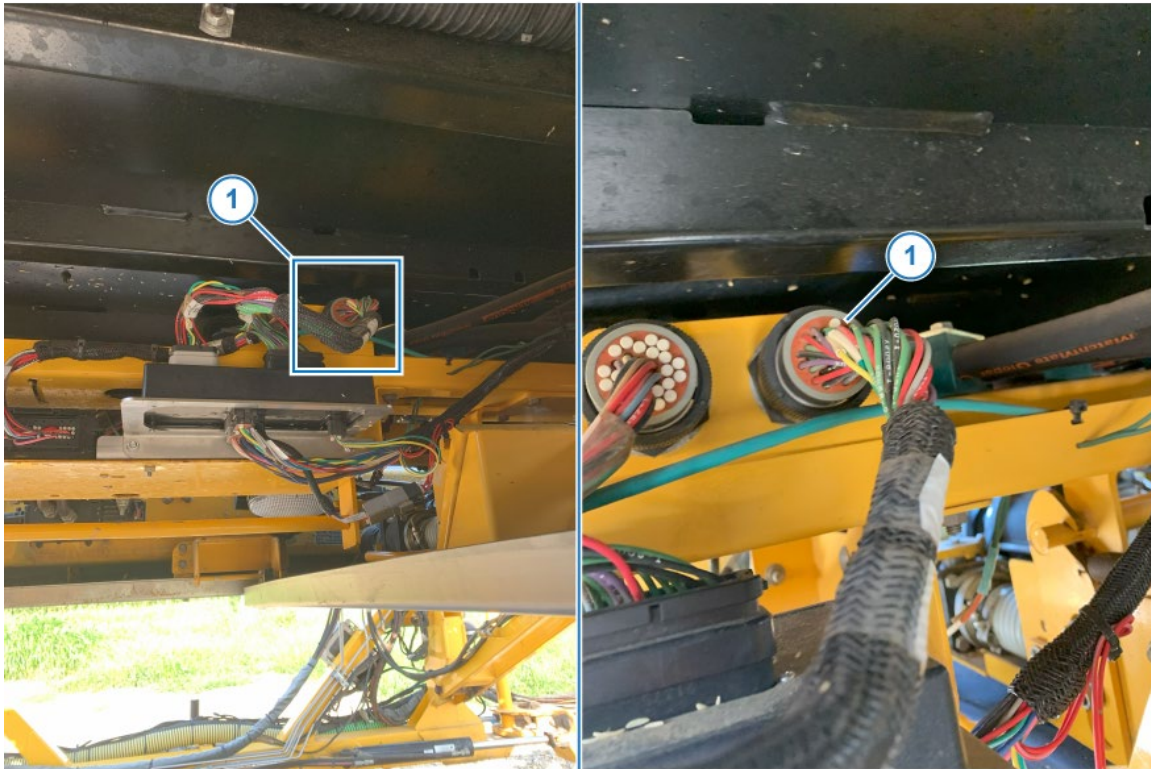


Figure 3 — Harness Connector

6. *Figure 3*: Plug the chassis harness into the 31-pin connector above the RCM mounting under the cab.

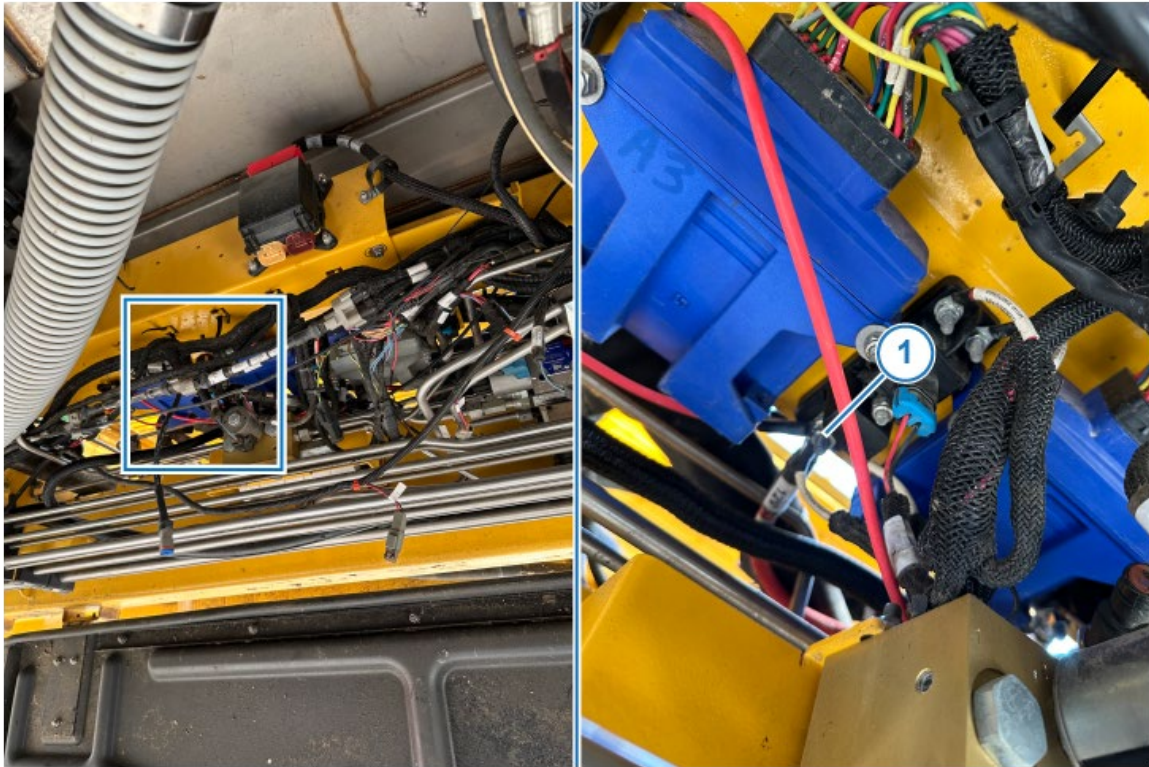


Figure 4 — Power Harness

7. *Figure 4:* Connect the power and ground harness cables to the hub and route them along with the Chassis harness under the cab to the right frame rail.
8. Locate the positive connection point (1) and secure the harness cable with supplied hardware.

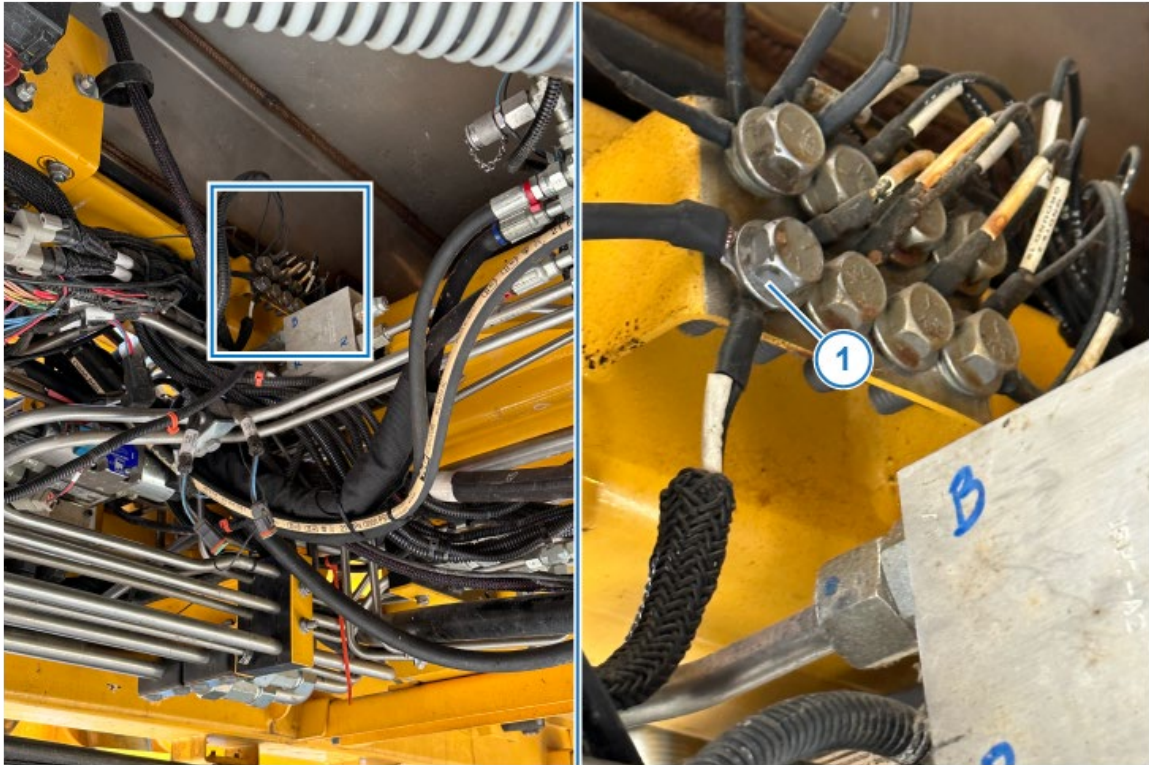


Figure 5 — Ground Harness

9. *Figure 5:* Locate the ground connection point (1) and secure the harness cable with supplied hardware.
10. Secure all harnesses with zip ties, ensuring that they are secured in such a way that they will not be prone to wear by rubbing on machine frame or other components.
11. Reset the Envelop Hub power harness breaker and machine main power breaker.