

PinPoint™

Gateway Hub Mounting Kit

For
Hagie Sprayers 2018 and after
with 120 ft and 132 ft Booms



Installation Instructions

www.capstanag.com | www.capstanag.ca
prodsupport@capstanag.com | 855-628-7722

All trademarks are owned by Capstan Ag Systems, Inc. This product may be covered by one or more U.S. Patents. For more information go to www.BlendedPulse.com

©2020 Capstan Ag Systems, Inc. All rights reserved. No part of this publication may be reproduced, stored in a retrieval system, or transmitted, in any form or by means electronic, mechanical, photocopy, or otherwise, without prior written permission of Capstan Ag Systems, Inc.

Chapter 1: Installation Instructions

Parts List for Kit 118640-124

This kit is for 2018 and after Hagie Sprayers with 120 ft or 132 ft booms.



Fig. 1:

Callout	Part Number	Description	Parts Drawing Description	Qty
(1)	118640-120	Mounting Plate	Mount, Gateway, Hagie, 2018	1
(2)	118640-121	Mounting Bracket	Mount, Gateway, Hagie, 2018	1
(3)	118640-122	Mounting Flat Bracket	Mount, Gateway, Hagie, 2018	2
(4)	713501-422	1/2-13 x 6 Hex Bolt	Bolt, Hex, 1/2-13 x 6 SS Full Thrd	4
(5)	713501-529	1/2-13 Flange Hex Nut	Nut, Hex, Flange, 1/2-13, SS	4
Not Shown	713501-423	3/8-16 x 1 Hex Bolt	Bolt, Hex, 3/8-16 x 1 SS	4
Not Shown	713501-530	3/8-16 Flange Hex Nut	Nut, Hex, Flange, 3/8-16 SS	4

Kit Installation



Fig. 2:

1. Find the correct mounting location (1).
On the boom, toward the left side of the center section as shown.
2. Remove the cable ties (2).

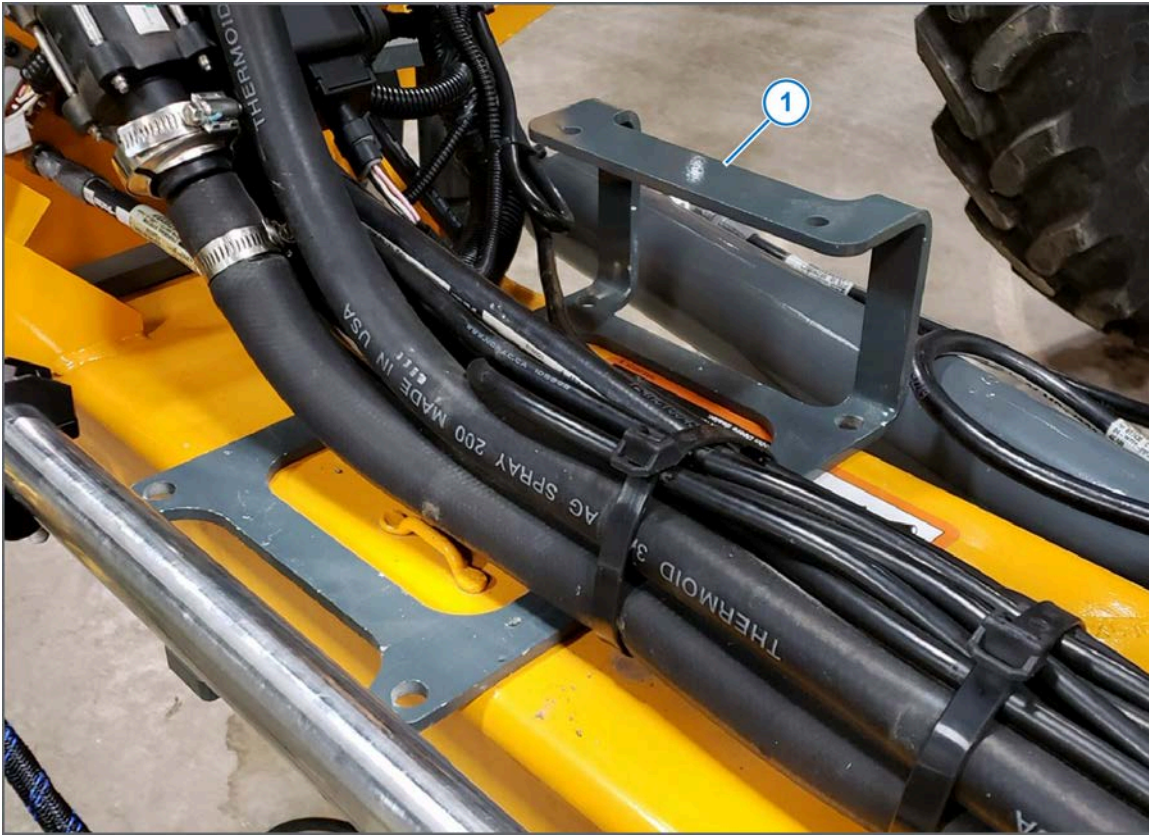


Fig. 3:

3. Slide the mounting plate (1) (P/N 118640-120) under the existing harnessing.

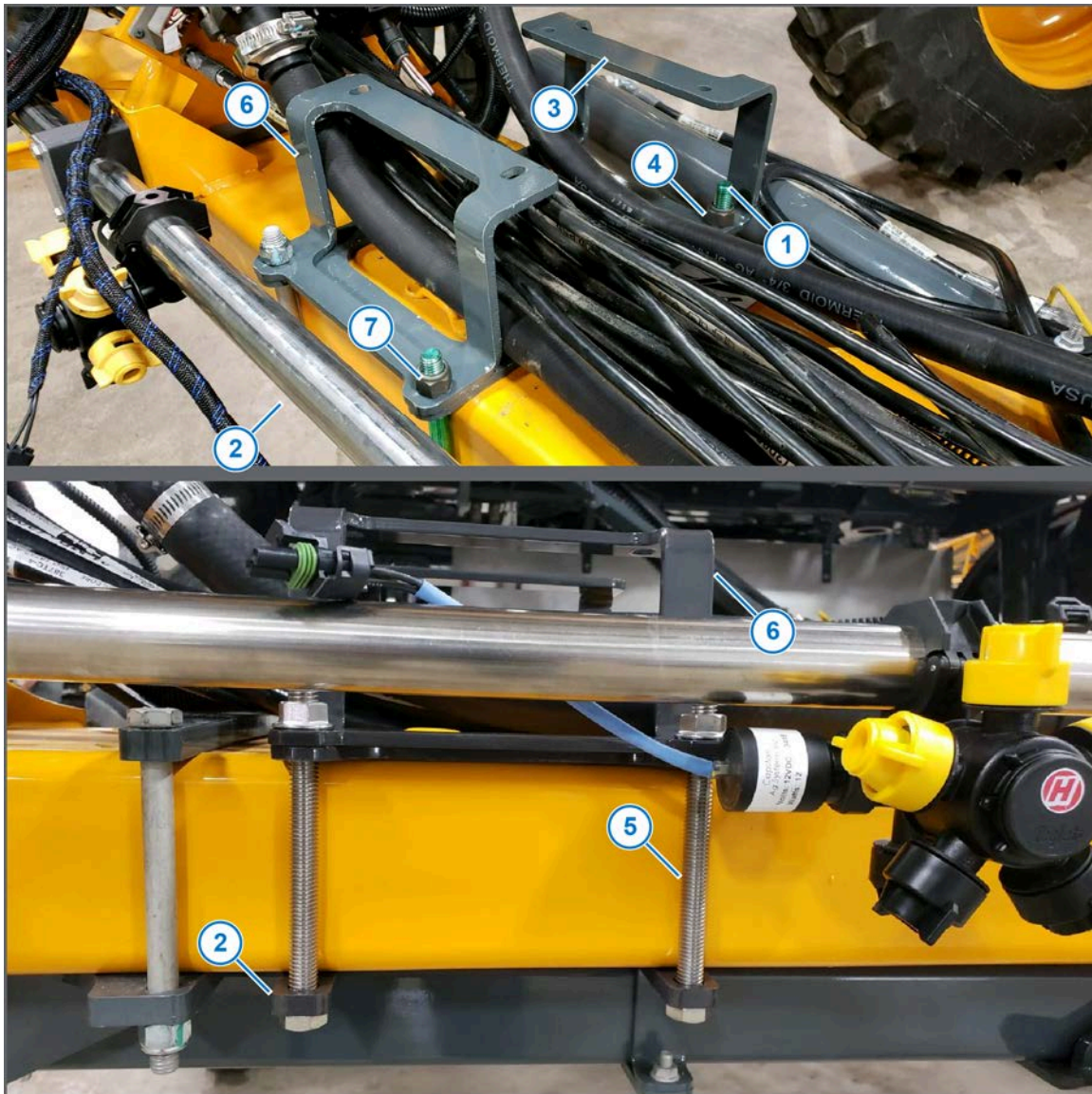


Fig. 4:

4. Install two of the 1/2-13 x 6 hex bolts (1) (P/N 713501-422) through the end of the mounting flat plates (2) (P/N 118640-122) and then through the mounting plate (3) as shown.
5. Install two of the 1/2-13 flange hex nuts (4) (P/N 713501-529), but to not tighten.
6. Install the remaining two 1/2-13 x 6 hex bolts (5) through the other end of the flat plates and then through the mounting plate.
7. Install the mounting bracket (6) (P/N 118640-121) onto the mounting plate and bolts.
8. Install the remaining two 1/2-13 flange hex nuts (7).
9. Tighten all four nuts.



Fig. 5:

10. Install the Gateway hub (1) with the 3/8-16 x 1 hex bolts (PN 713501-423) and 3/8-16 flange hex nuts (PN 713501-530) as shown.

