

INSTALLATION INSTRUCTIONS - 122200-215 Rev. A

PinPoint™ II TREE/CENTER KIT - 930073D1

Models: AGCO RoGator C Series Sprayers 2018 and After

BEFORE INSTALLATION

IMPORTANT: For safety information, refer to the system and machine manuals.

PARTS LIST

Part Number	Description	Qty
118657-001	Pressure Sensor Adapter Harness	1
118703-009	Gateway Hub Mounting Kit for RoGator Large Frame Mast	1
118669-050	Chassis Harness - AGCO Model Year 2018 and up	1
118669-052	6 Conductor Cab Extension Harness - 33 ft	1
118692-001	AGCO Switch Interface Module (SIM) Harness	1
118606-059	AGCO PinPoint™ SIM Shutoff Harness	1
620202-016	Auxiliary Pressure Sensor Extension Harness - 15 ft	1

INSTALLATION

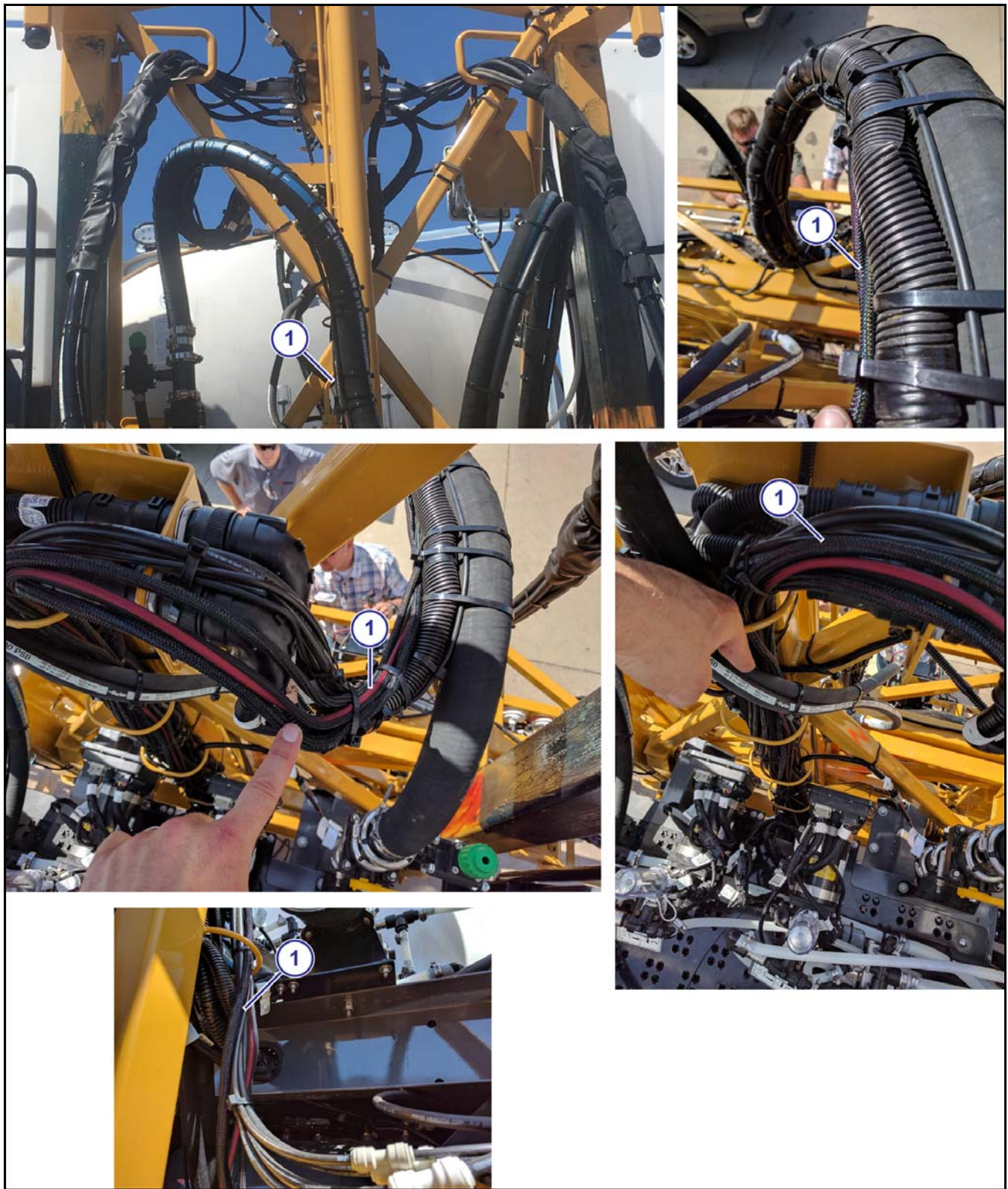


FIGURE 1

FIGURE 1: A 90 ft boom is shown.

1. Route the chassis harness (1) along the other electrical harnesses and the liquid-supply product plumbing up through the center section and towards the catwalk at the rear of the machine. Continue to follow the electrical plumbing through the metal rings down to the chassis cutout.

FIGURE 2:

2. Follow the electrical plumbing to the right side of the machine and run along the electrical node/control box.
3. Route the two 6-pin connectors (1) into the node box.
The cab harness tees into an existing connection.
 - If the machine is configured for Raven control, tee the connectors between X0775 and X0777.
 - If the machine is configured for AgControl (EXT), tee the connectors between X0775 and X0776.

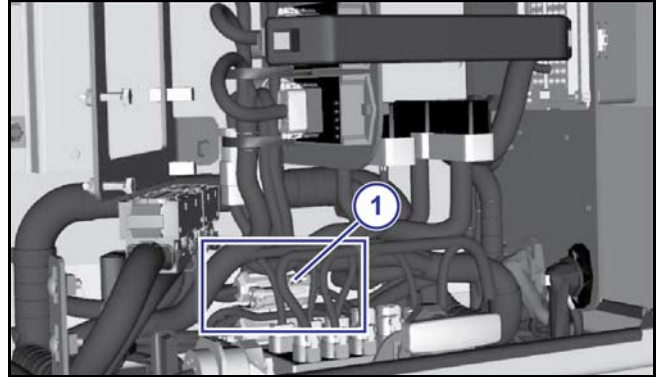


FIGURE 2

FIGURE 3: The cab extension harness connects the Gateway hub to the connector on the rear corner of the cab.

4. Connect the 6-pin Deutsch DT male connector end into the Boom 12 port on the Gateway.
5. Then route the cab extension harness like the chassis harness up through the center section and then down along the right side of the machine to the outside rear corner of the cab.
6. Connect the 8-pin Deutsch DT male connector (1).

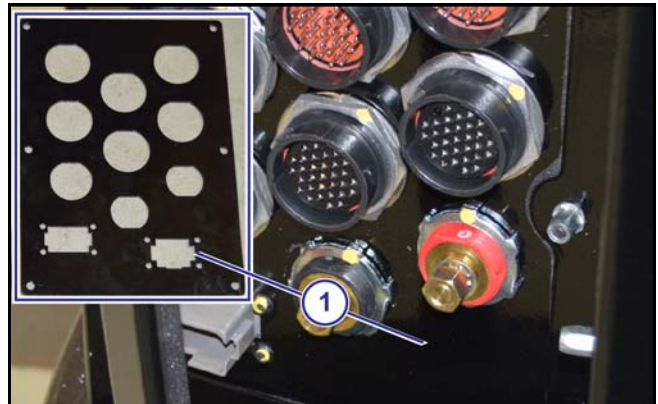


FIGURE 3

FIGURE 4:

7. Connect the extension harness to the pressure sensor adapter harness (P/N 620202-016+).
8. Route the extension harness along the left side of the machine along the frame rail toward the strainers.
9. Connect the pressure sensor (1) to the pressure sensor extension harness.
10. Use cable ties to secure the harness to the product plumbing every 18 in to 24 in.



FIGURE 4

NOTES