

1.0 - INSTALLATION INSTRUCTIONS - 118155-001 Rev. B

Gateway Power Hub Mount Kit for JD R Series

- Models - R4030/R4038/R4045

KIT NUMBER- 118703-006	
PART NUMBER	DESCRIPTION
118640-110	Gateway Power Hub Mount
713501-404	3/8-16 x 1-1/2 Flange Bolt
413600-003	3/8 Flat Washer
713501-905	3/8-16 with K Lock Hex Nut
713501-409	3/4-10 x 1-1/2 Hex Bolt
713600-004	3/4 Lock Washer
713501-906	3/4-10 Hex Nut

For safety information see the system and machine manuals.

1. **[Figure 1]** - Identify the mounting location (1) on the top right corner of main boom frame.

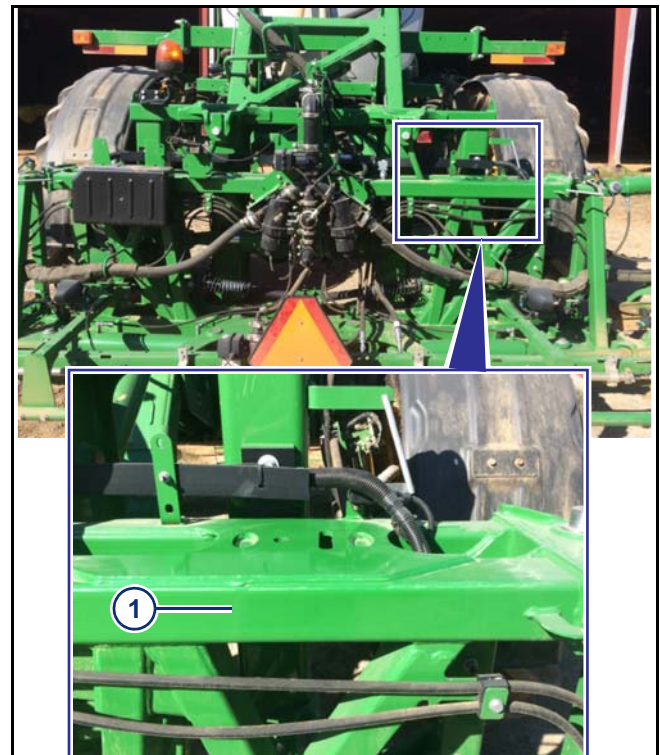


Figure 1

2. **[Figure 2]** - Attach the mounting plate (1) to the boom using the supplied hardware.

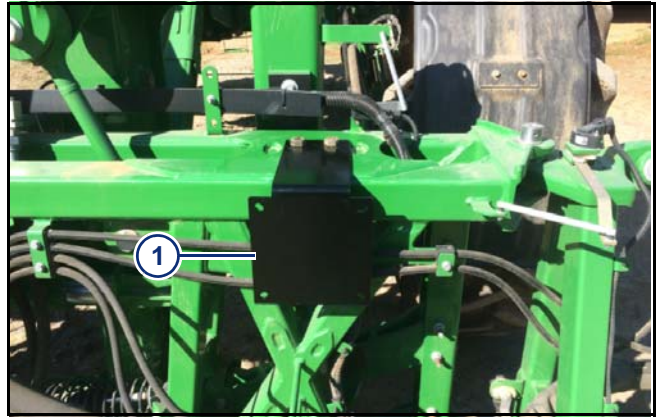


Figure 2

3. Attach the hub (1) to the mounting plate with supplied hardware as shown.

[Figure 3] - PinPoint[®] Gateway Hub

[Figure 4] - SharpShooter[®] with Rate Sync[®] Power Hub



Figure 3



Figure 4